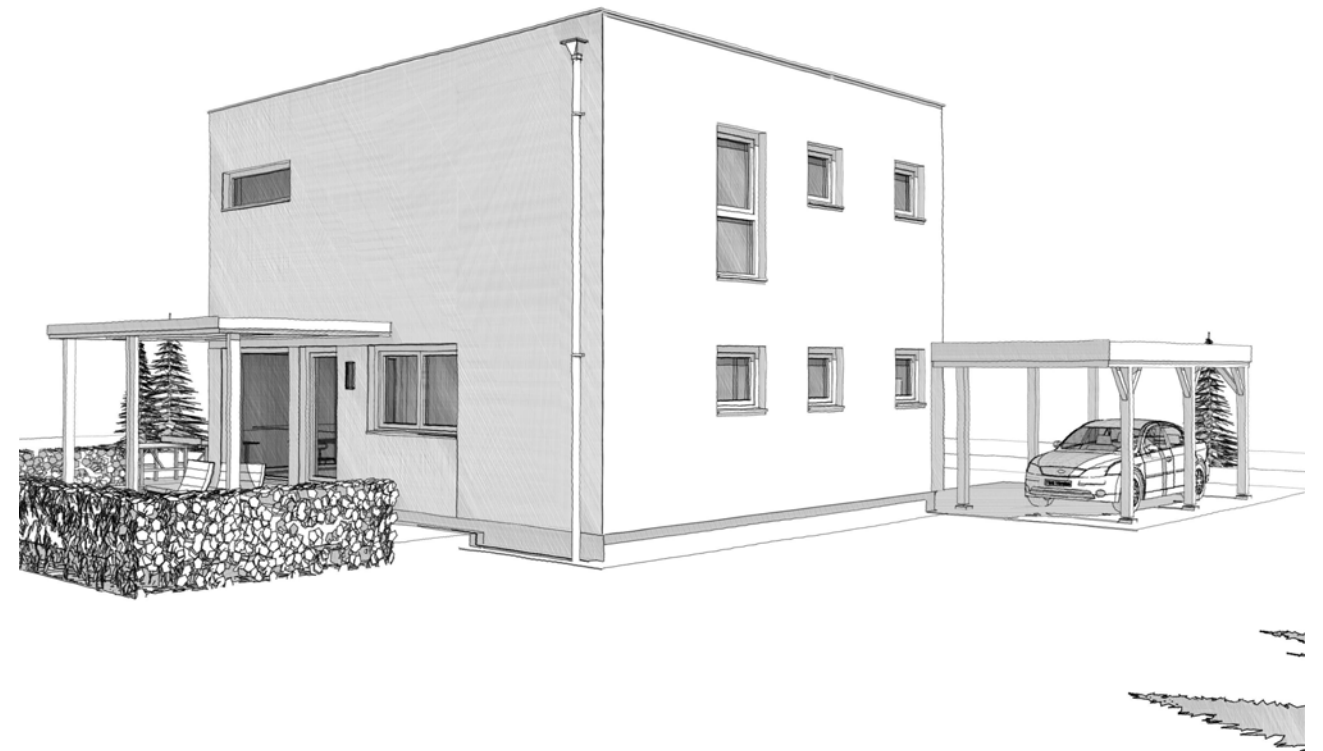
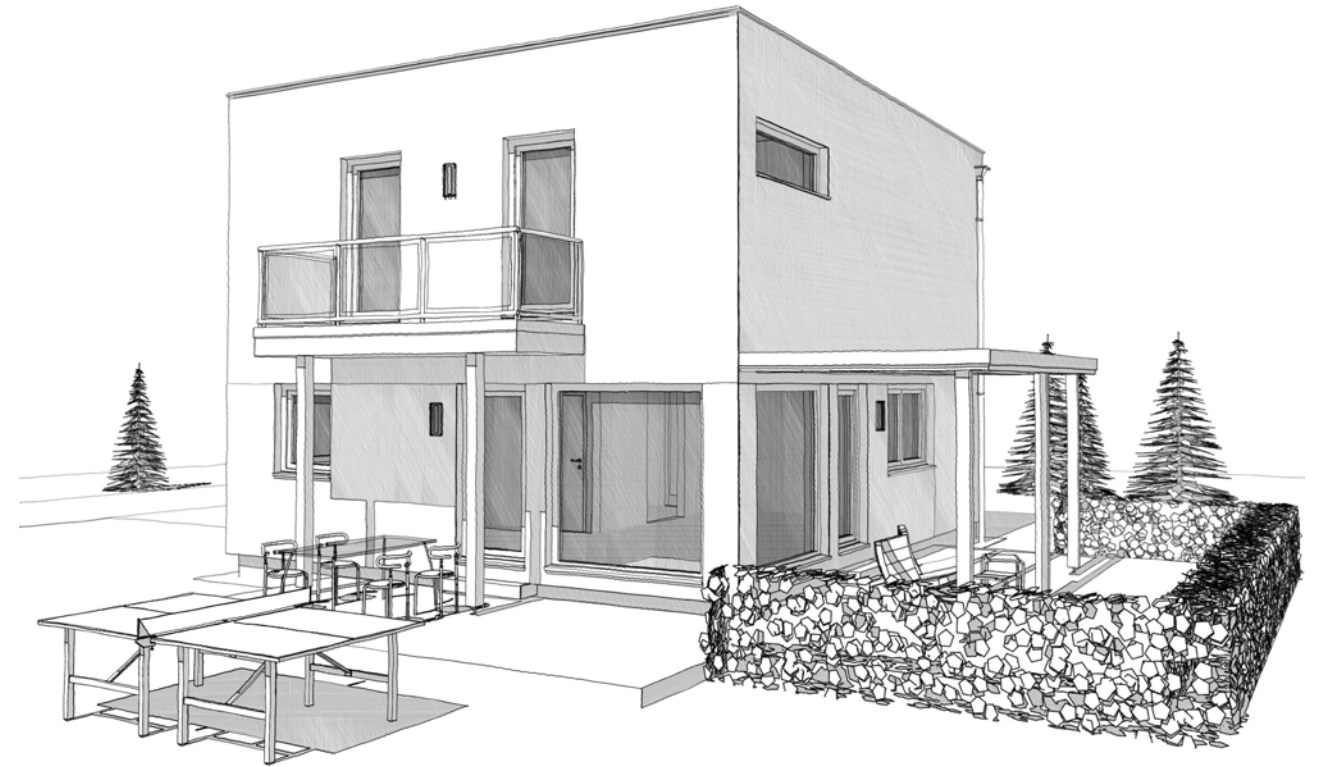
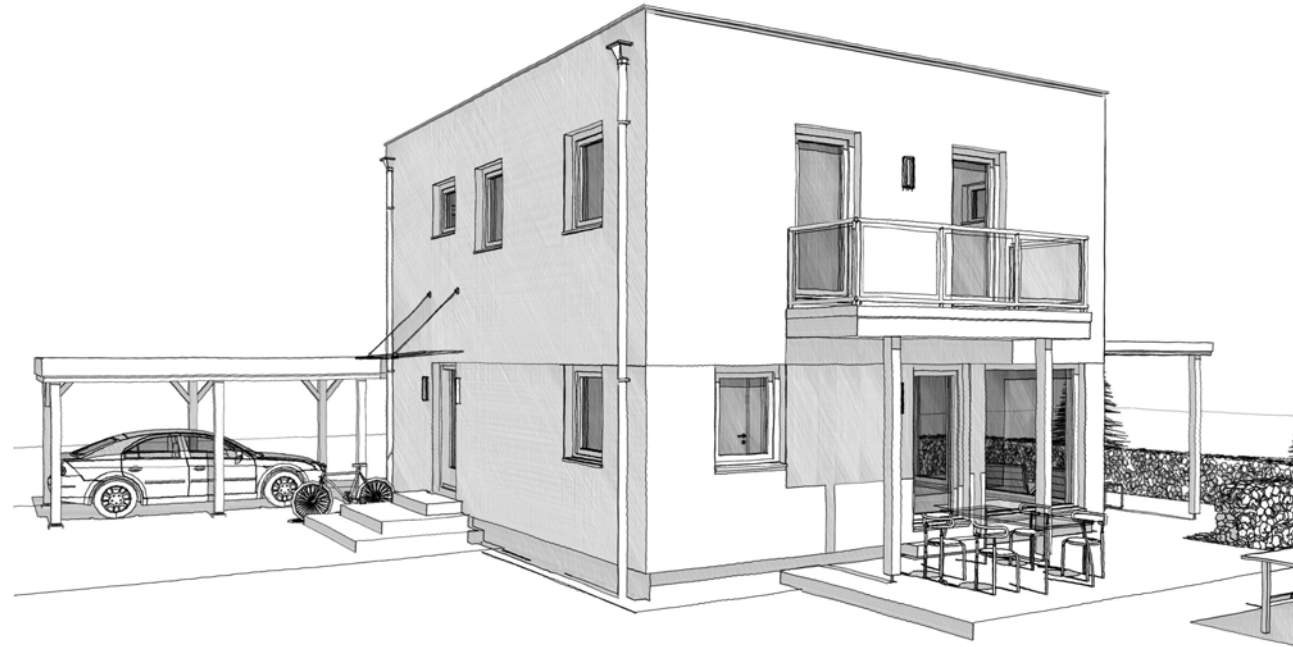


# ELK Living 122



DACH	Satteldach	Satteldach	Walmdach	Flachdach	Pulldach
	40° Kst. 1,00 m	25° Kst. 1,80 m	25°	3%	7°

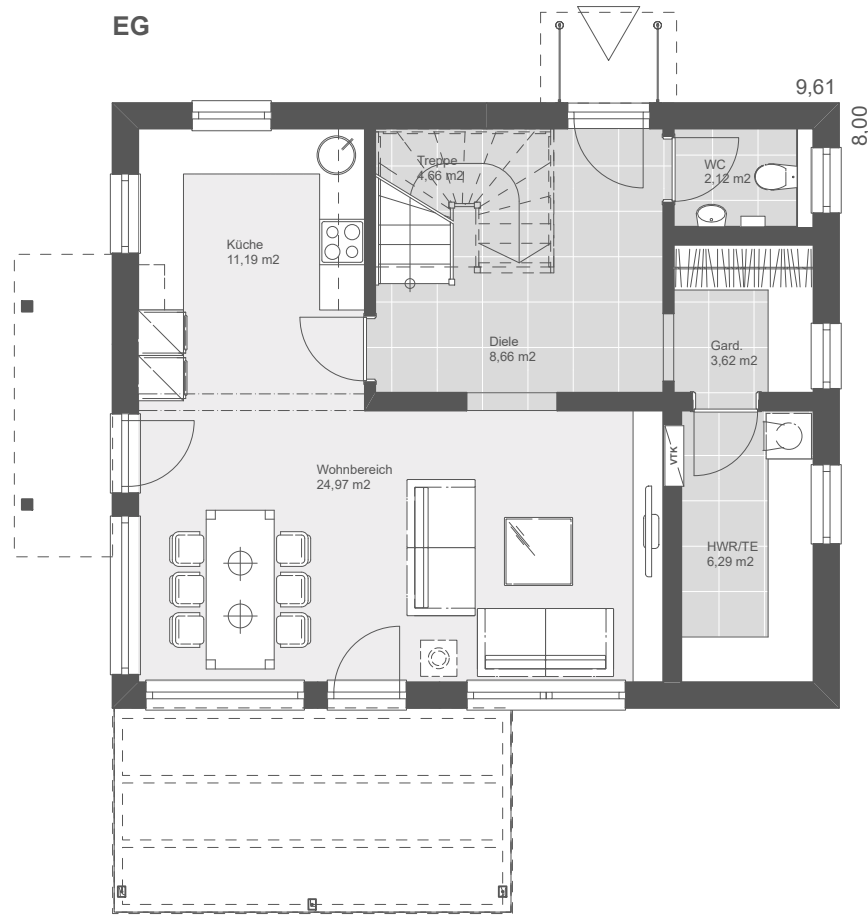
HMa / 13.06.2018

@ DIN A3

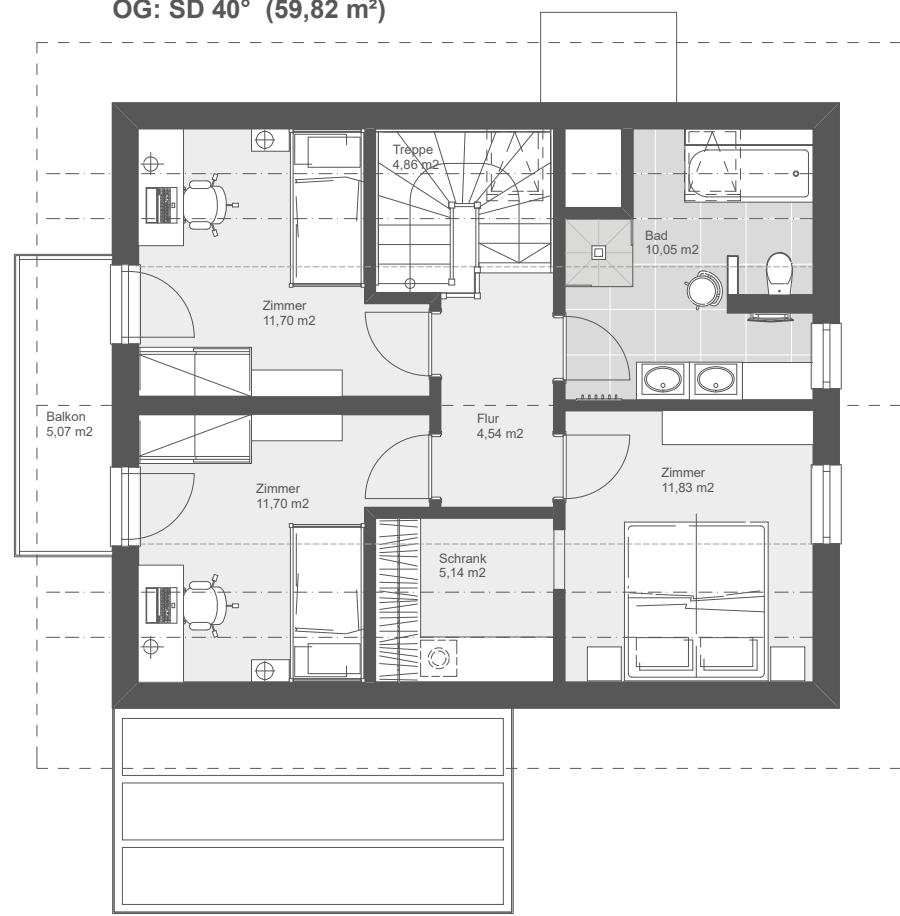


# ELK Living 122

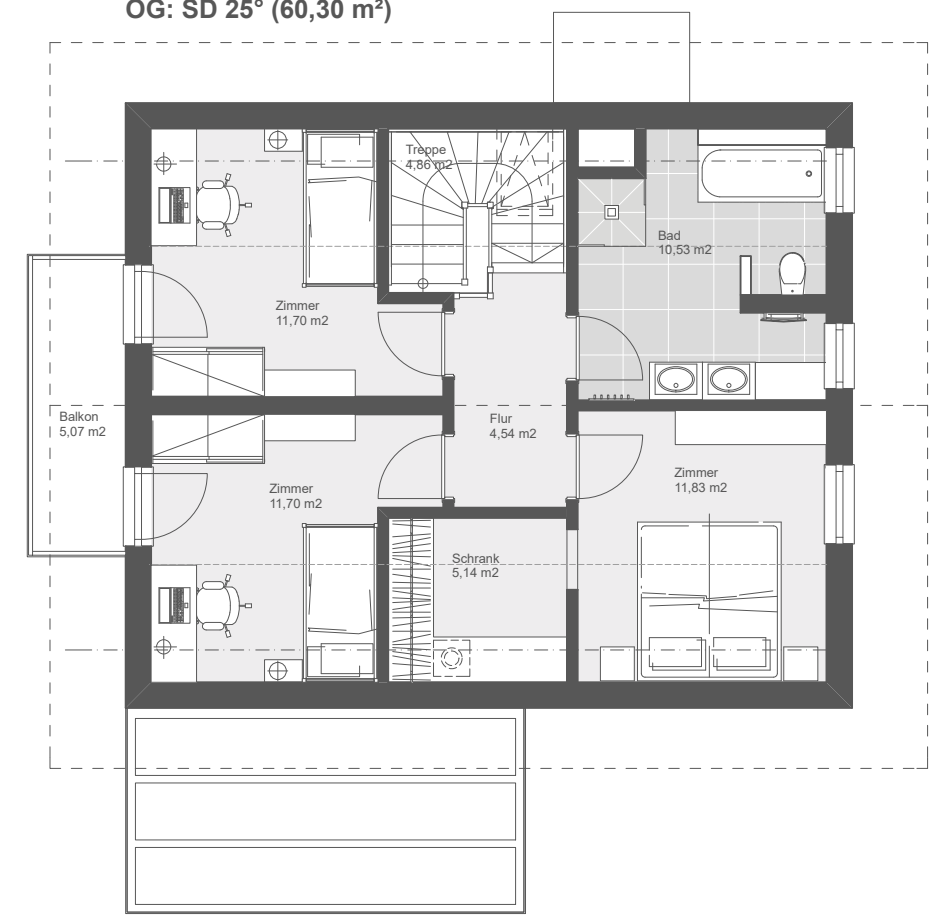
EG



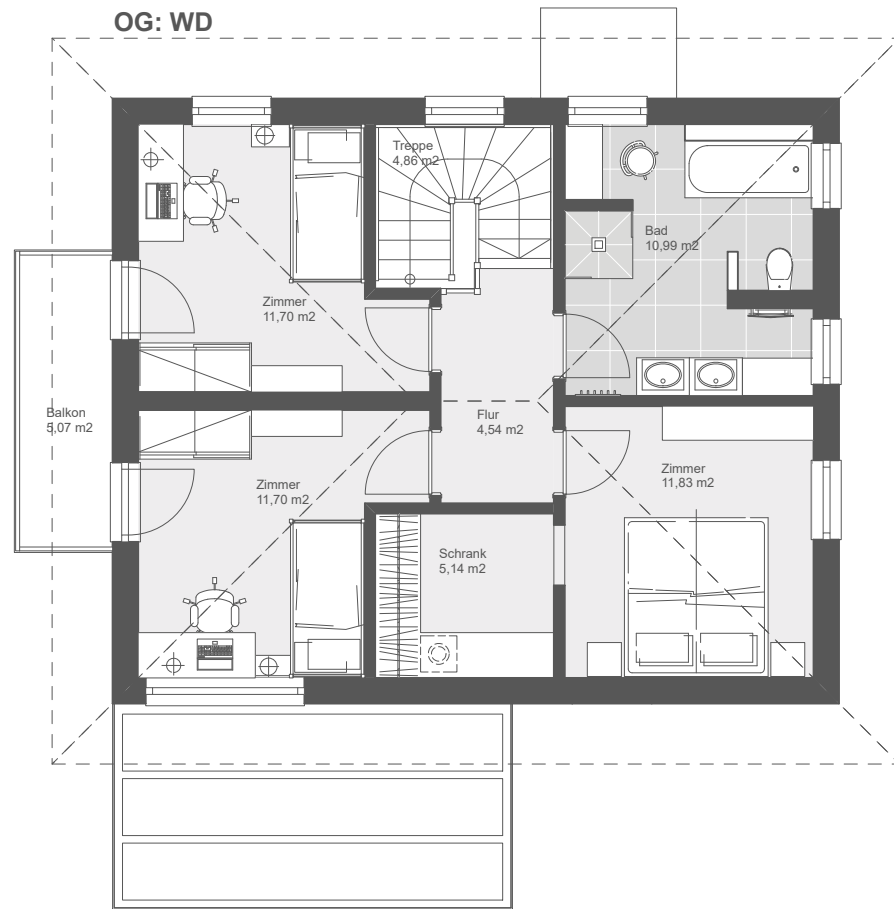
OG: SD 40° (59,82 m<sup>2</sup>)



OG: SD 25° (60,30 m<sup>2</sup>)



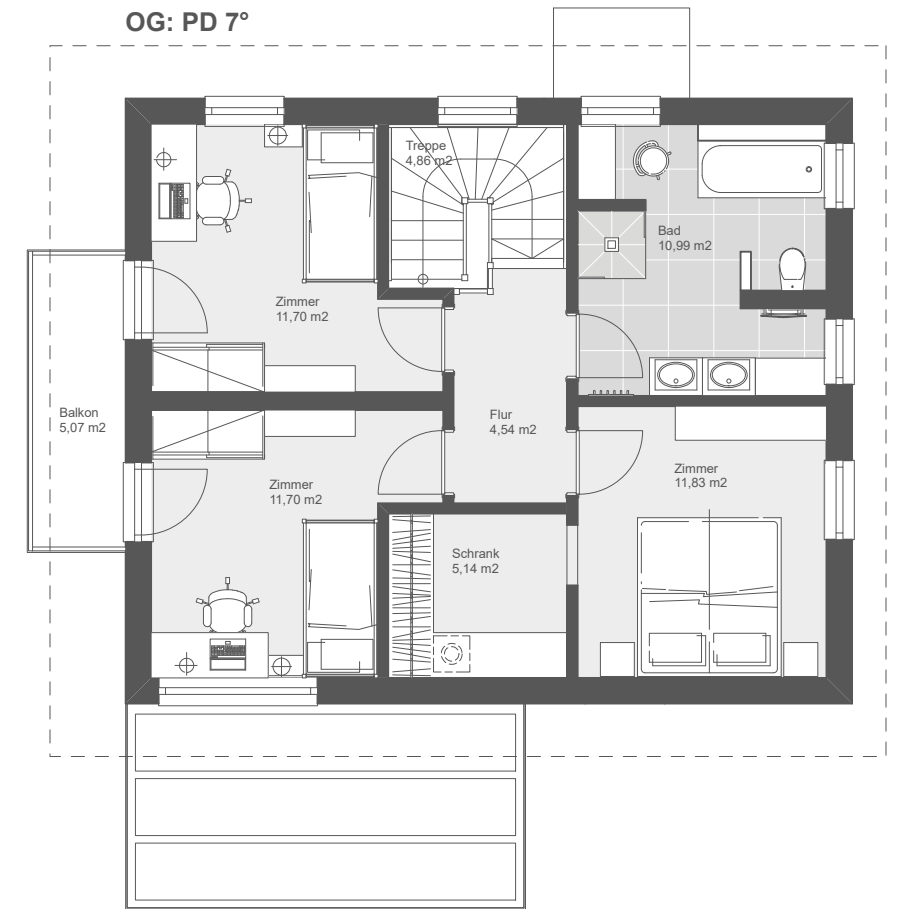
OG: WD



OG: FD



OG: PD 7°



Nettogrundrissfläche

ERDGESCHOSS	61,51 m <sup>2</sup>
OBERGESCHOSS	60,76 m <sup>2</sup>
Summe	122,27 m <sup>2</sup>

Bebaute Fläche: 76,88 m<sup>2</sup>

GRUNDRISSSE

M. 1:100



HMa/ 13.06.2018

@ DIN A3

DACH	Satteldach	Satteldach	Walmdach	Flachdach	Pultdach
	40° Kst. 1,00 m	25° Kst. 1,80 m	25°	3%	7°