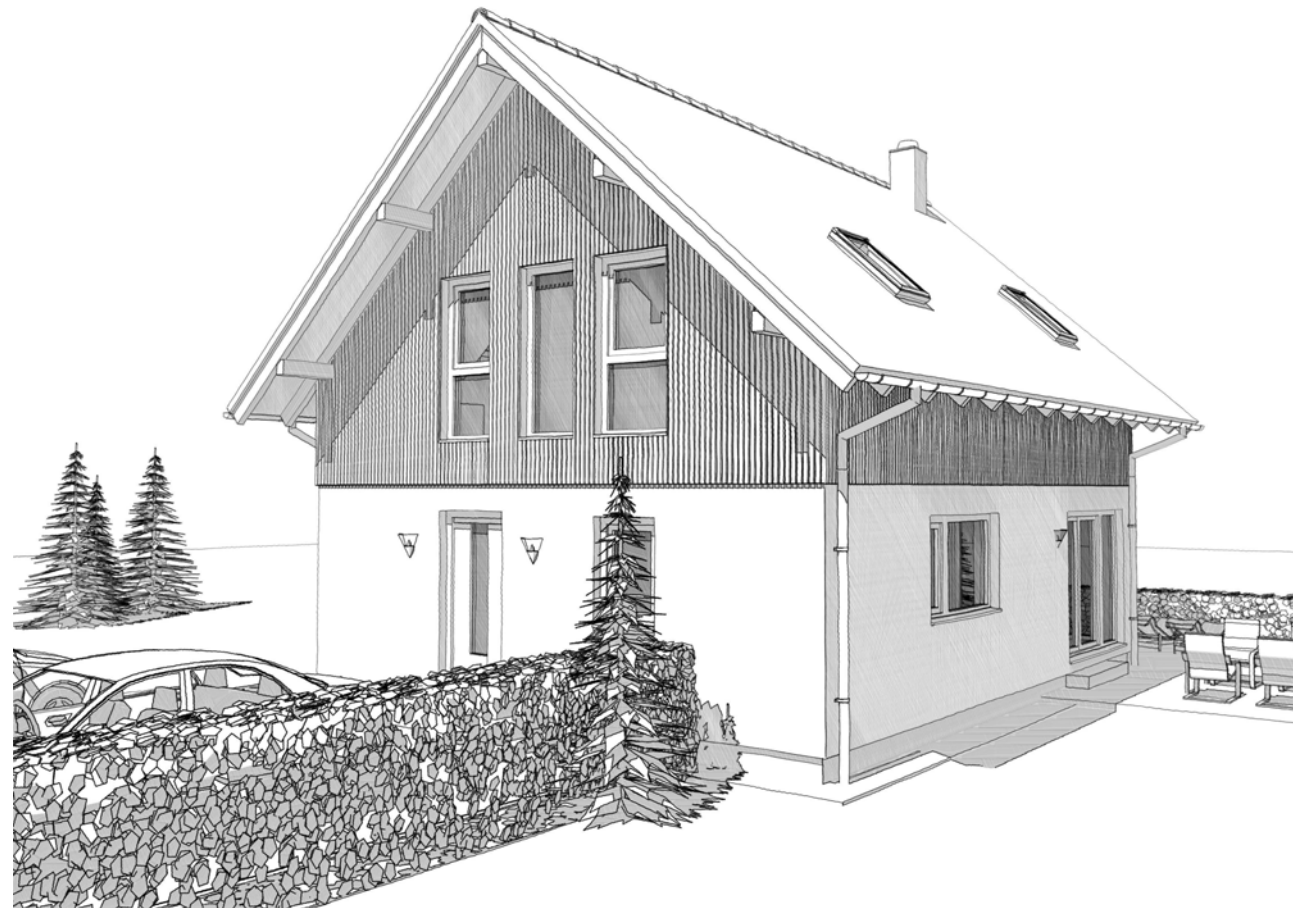
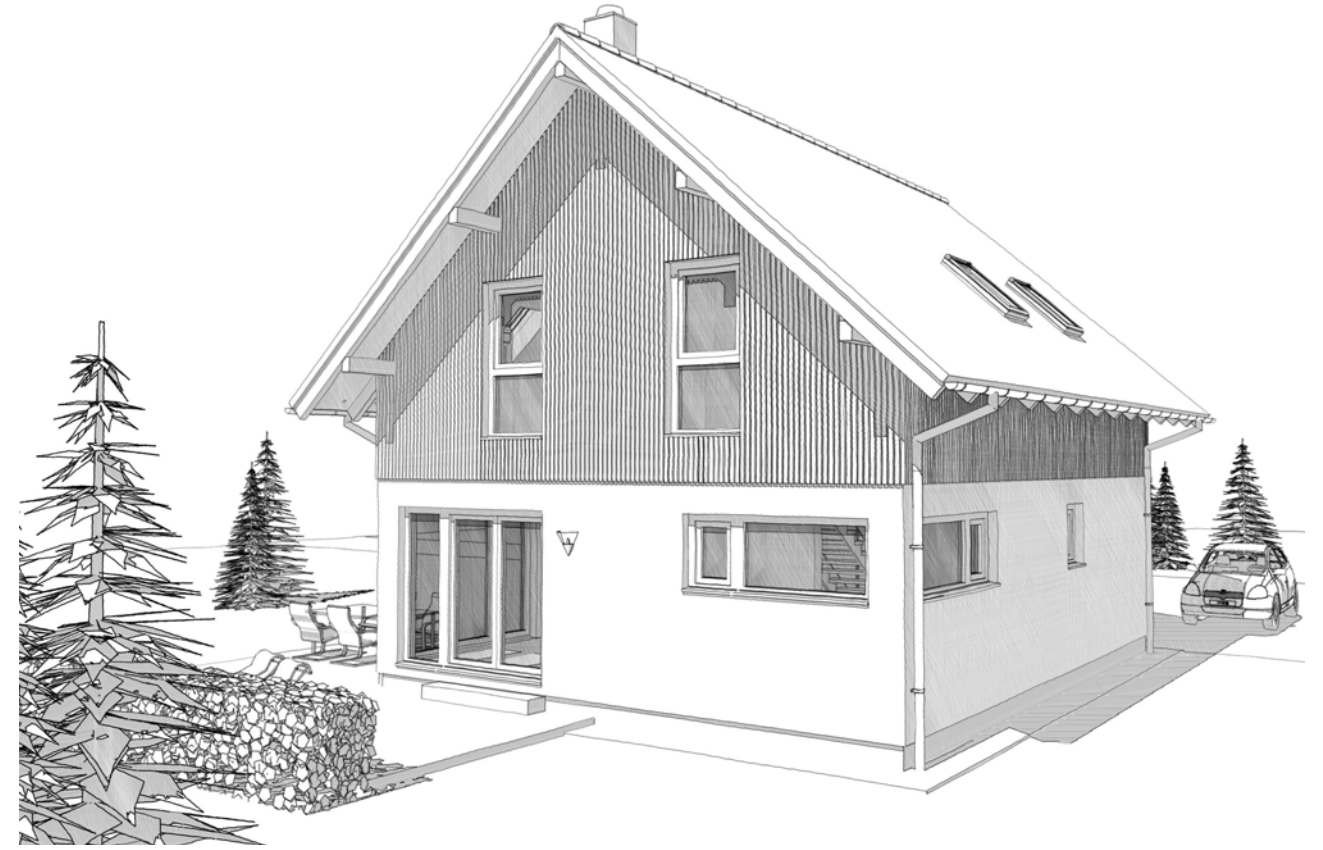
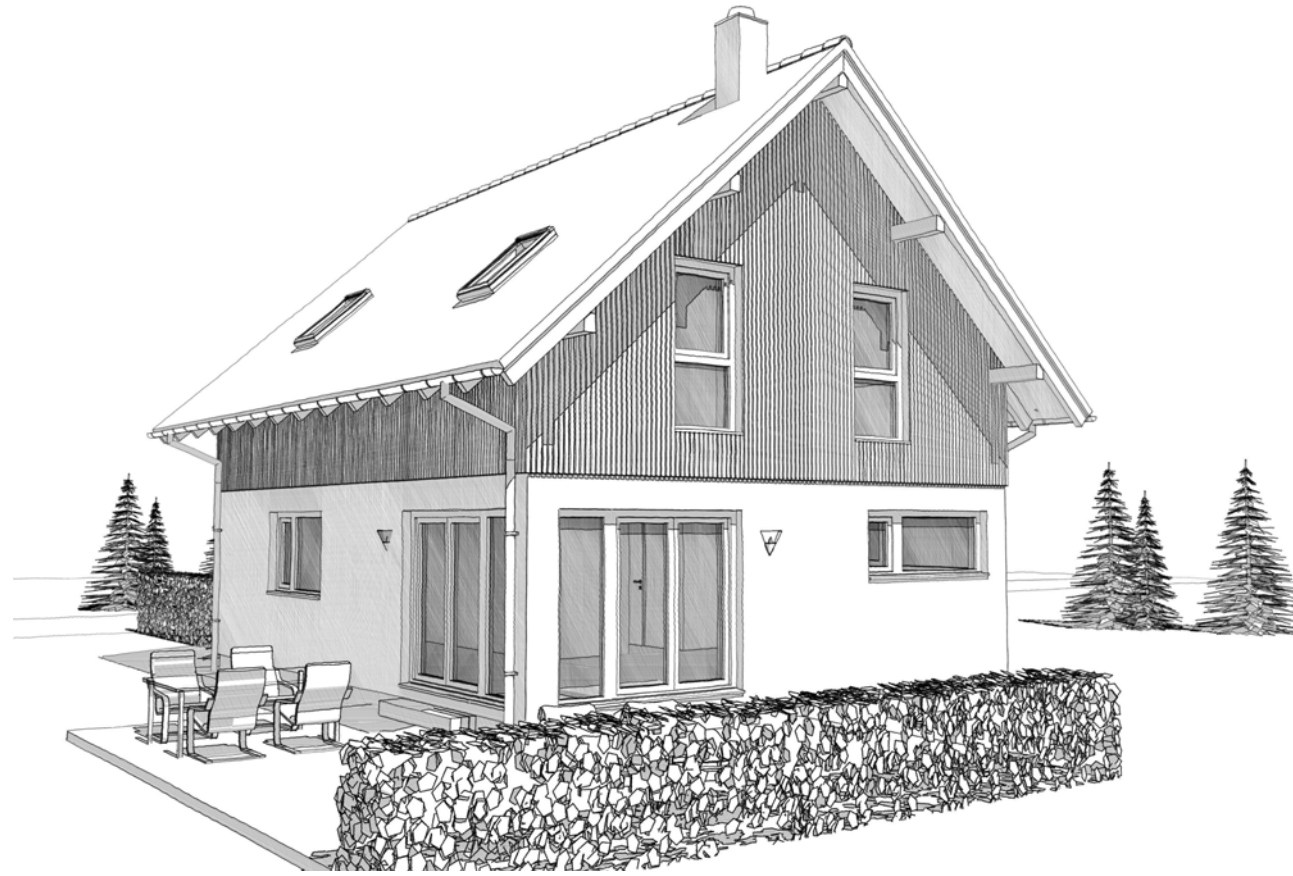
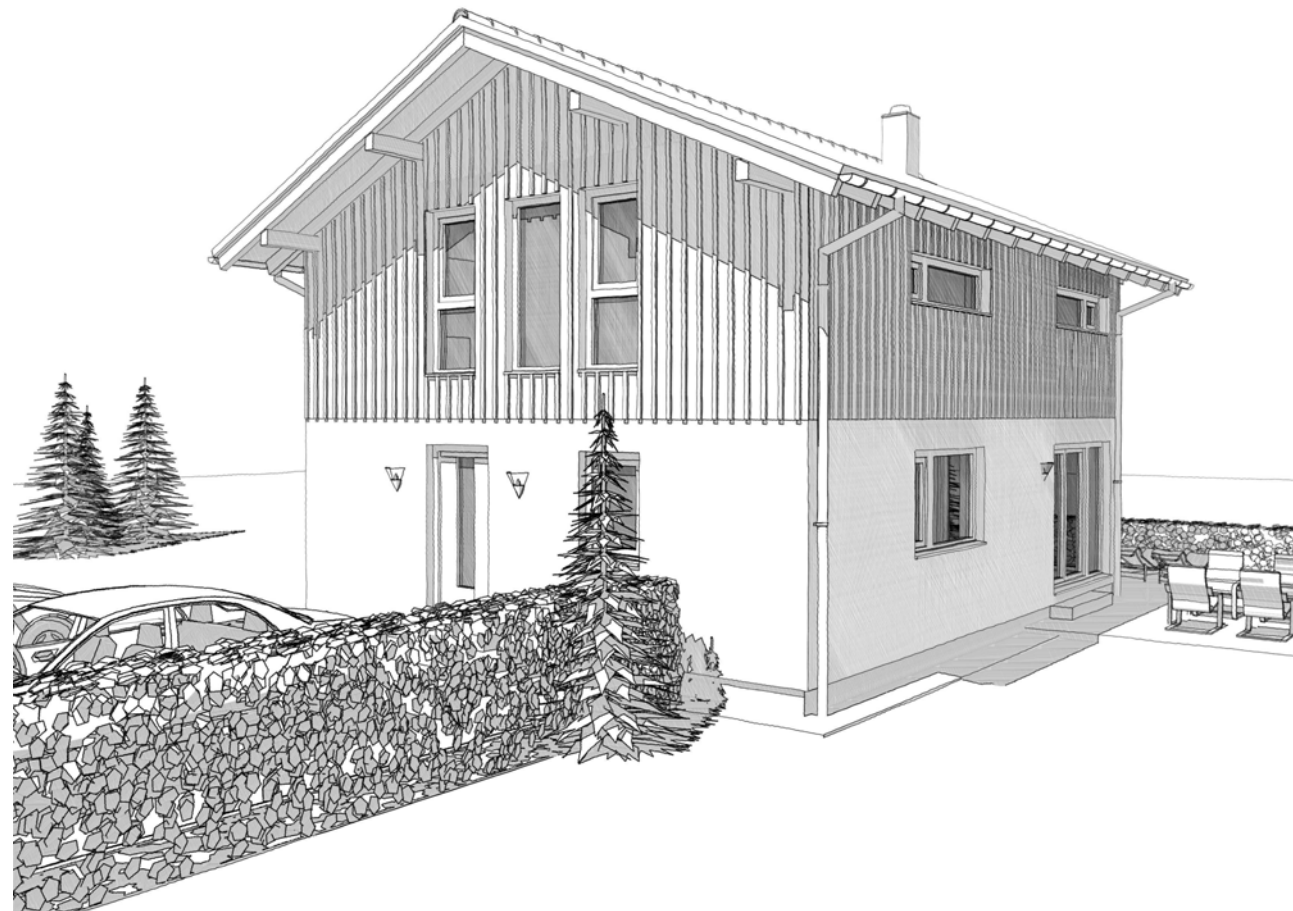
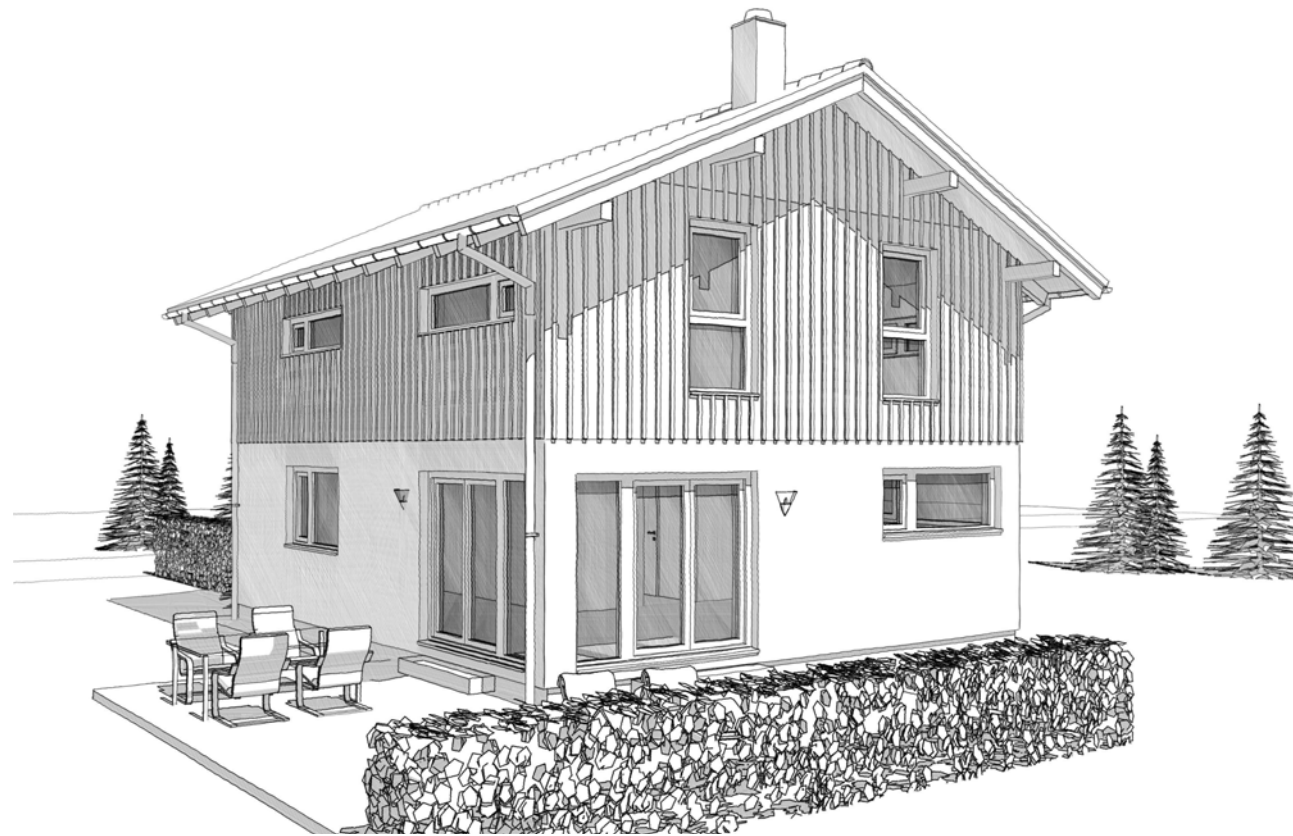


# ELK Top Living 129



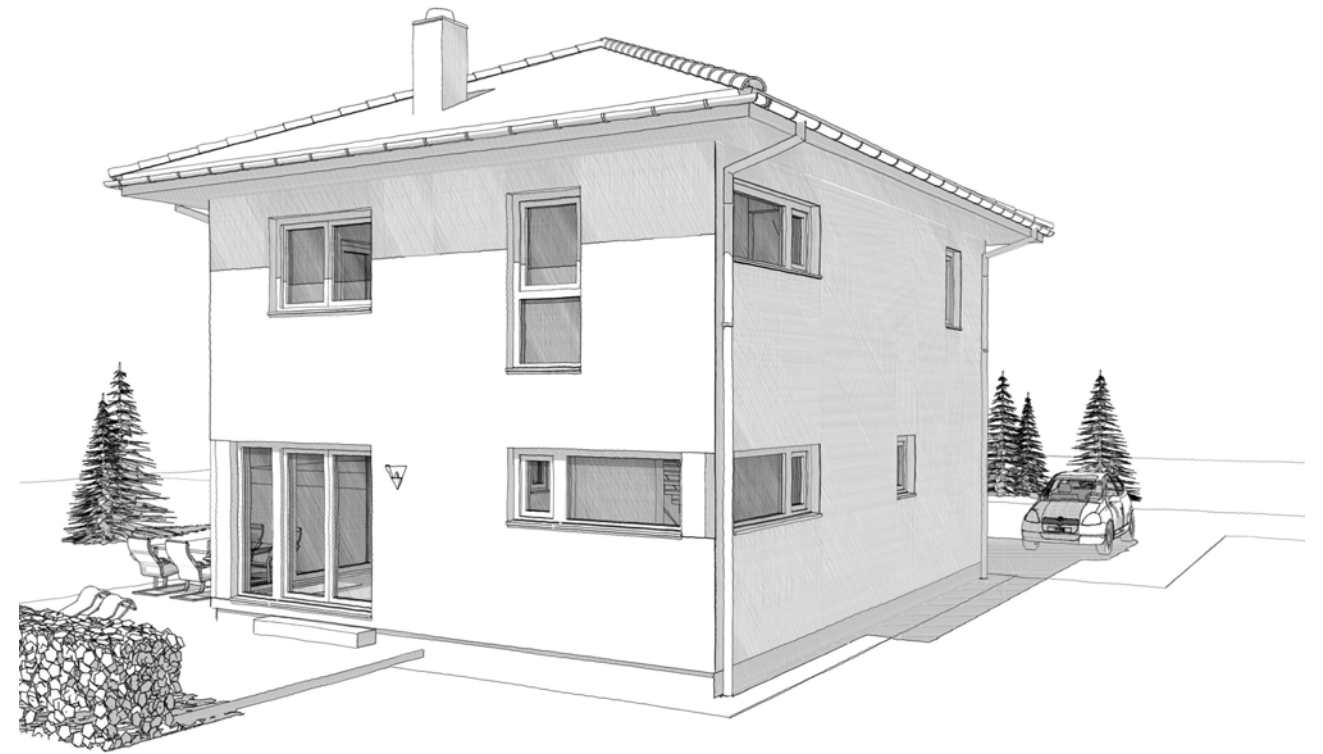
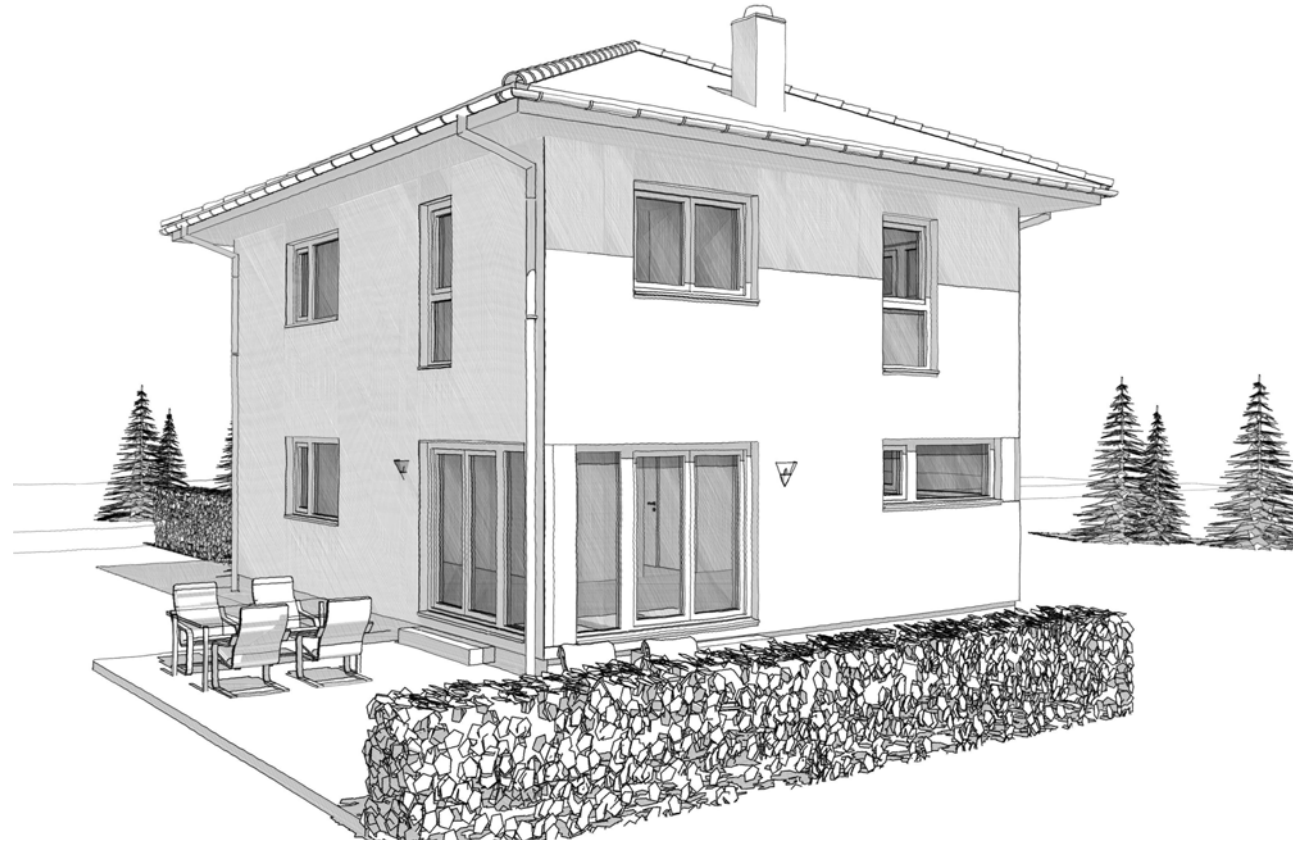
DACH	Satteldach	Satteldach	Walmdach	Flachdach
	42° Kst. 1,20 m	25° Kst. 2,00 m	25°	3%

# ELK Top Living 129



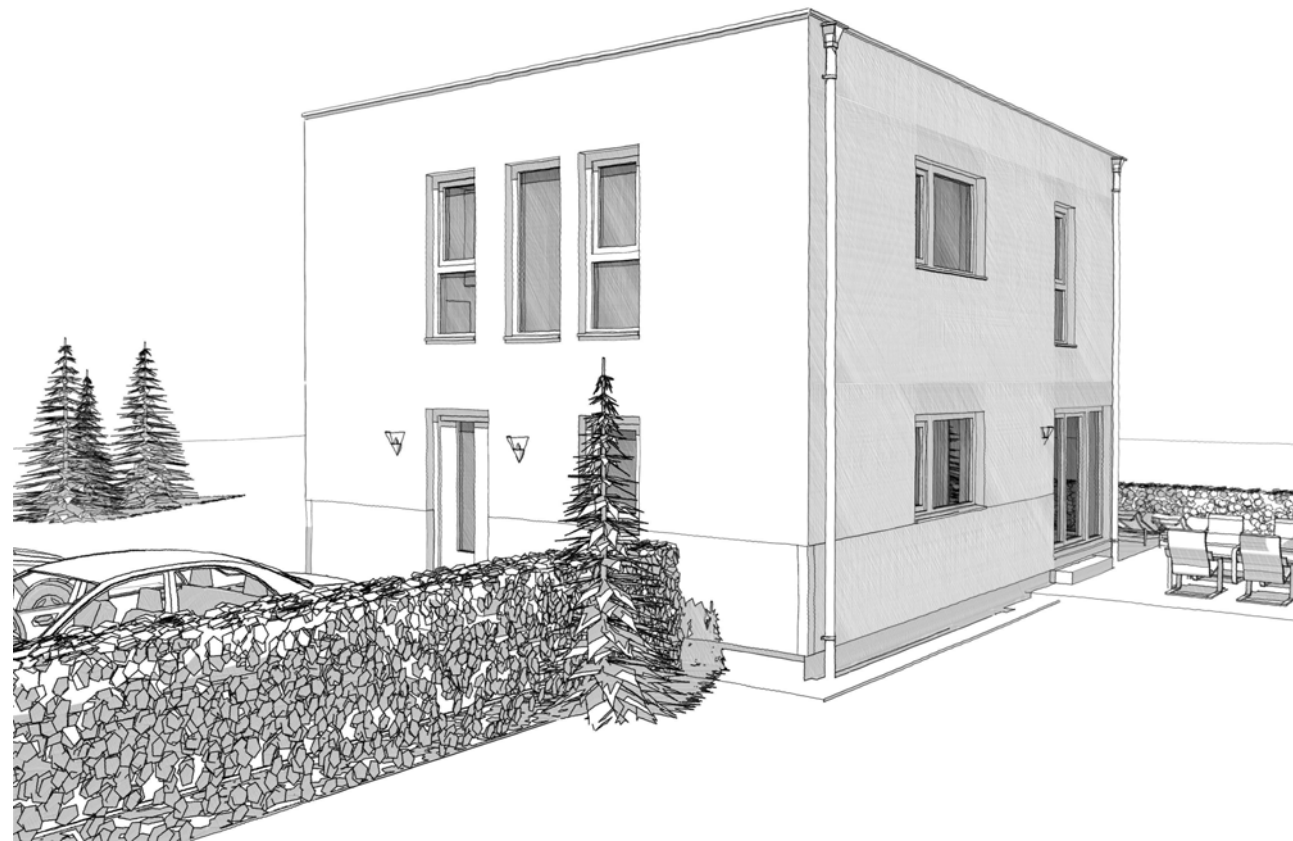
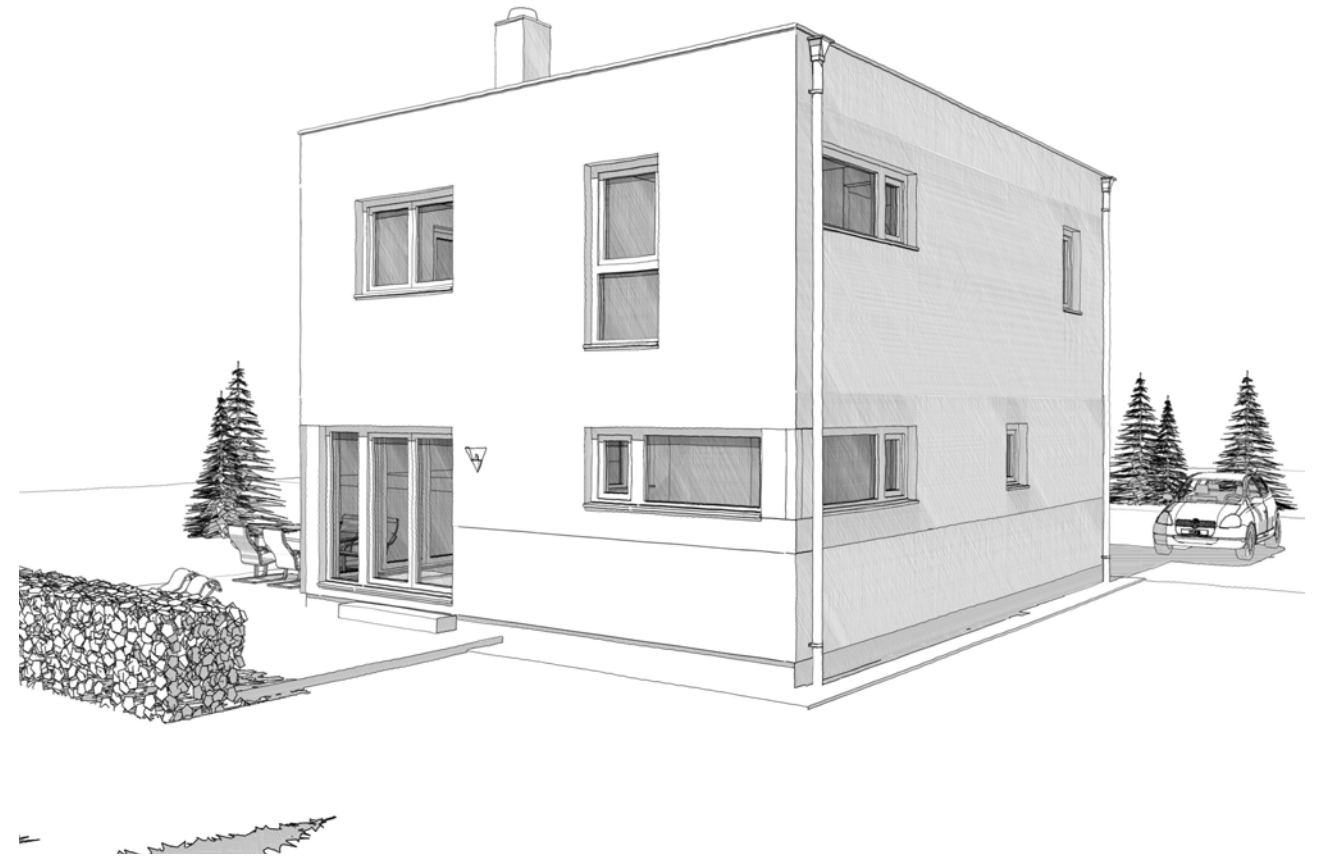
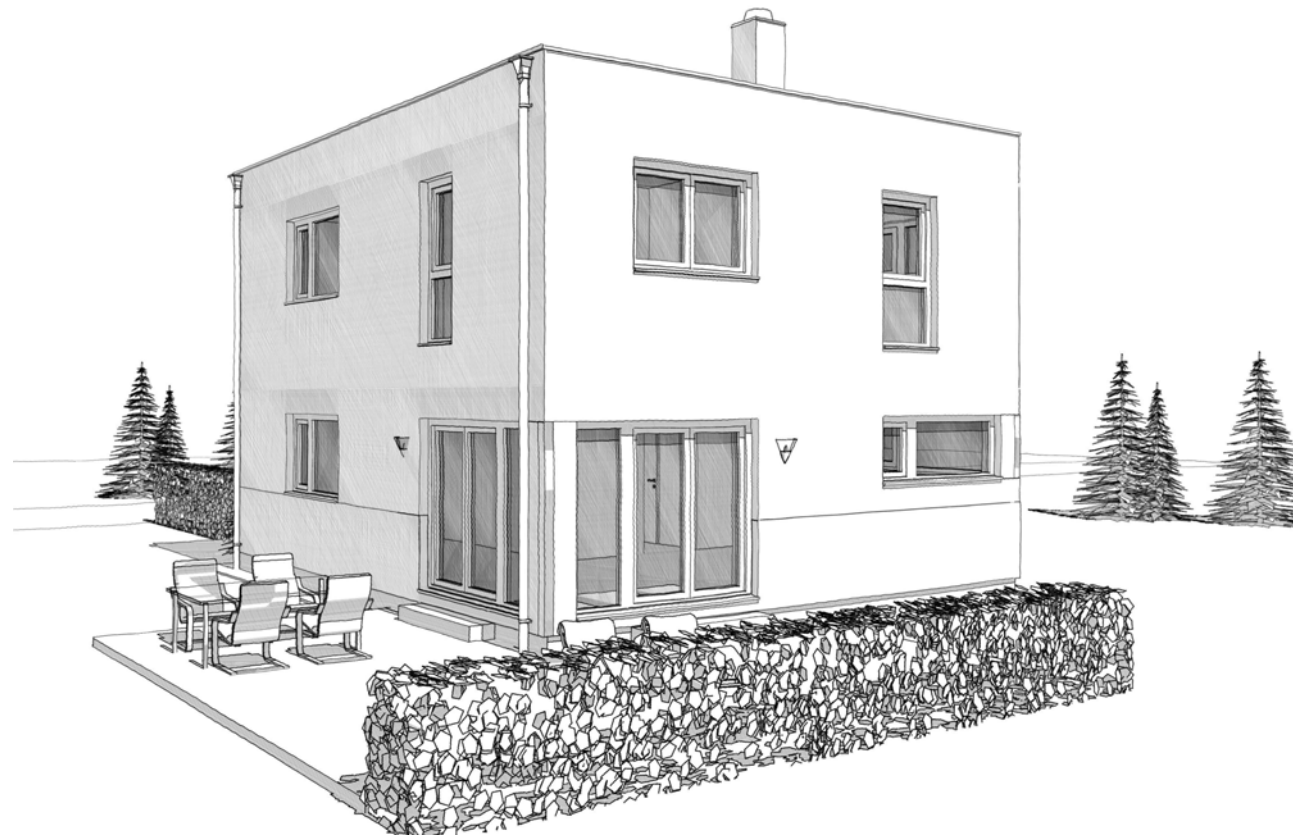
DACH	Satteldach	Satteldach	Walmdach	Flachdach
	42° Kst. 1,20 m	25° Kst. 2,00 m	25°	3%

# ELK Top Living 129



DACH	Satteldach	Satteldach	Walmdach	Flachdach
	42° Kst. 1,20 m	25° Kst. 2,00 m	25°	3%

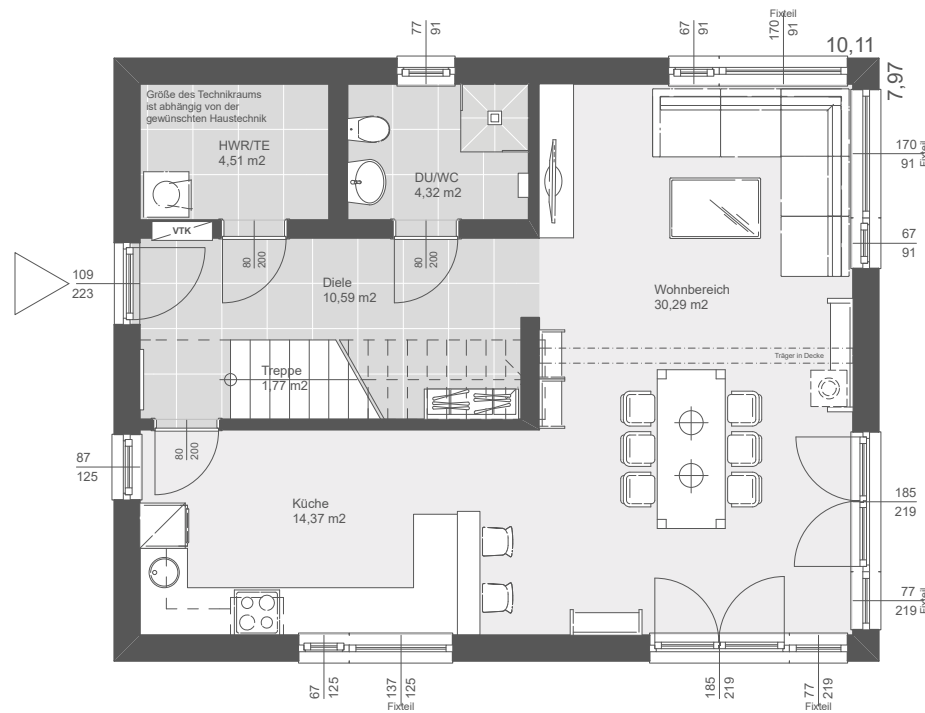
# ELK Top Living 129



DACH	Satteldach	Satteldach	Walmdach	Flachdach
	42° Kst. 1,20 m	25° Kst. 2,00 m	25°	3%

# ELK Top Living 129

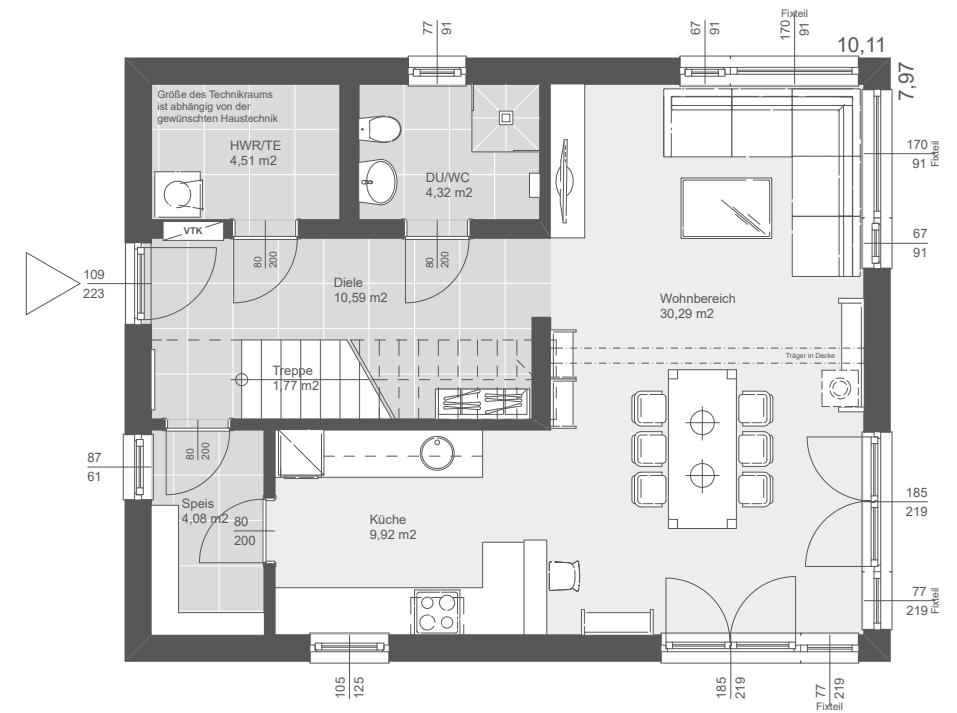
EG Standard



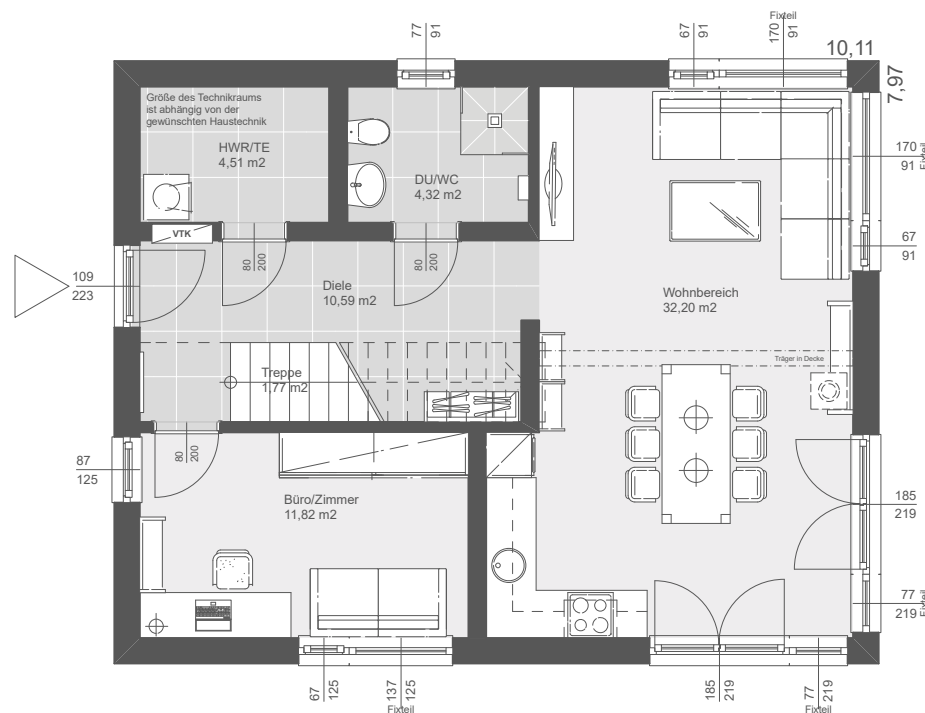
EG Variante KG-Treppe



EG Variante Speis (65,48 m²)



EG Variante Zimmer (65,21 m²)



Nettogrundrissfläche  
 ERDGESCHOSS Standard 65,85 m<sup>2</sup>  
 OBERGESCHOSS 63,51 m<sup>2</sup>  
 Summe exkl. Luftraum 129,36 m<sup>2</sup> BEBAUTE FLÄCHE 80,57 m<sup>2</sup>

DACH	Satteldach	Satteldach	Walmdach	Flachdach
	42° Kst. 1,20 m	25° Kst. 2,00 m	25°	3%

GRUNDRISSE - EG-Varianten M. 1:100

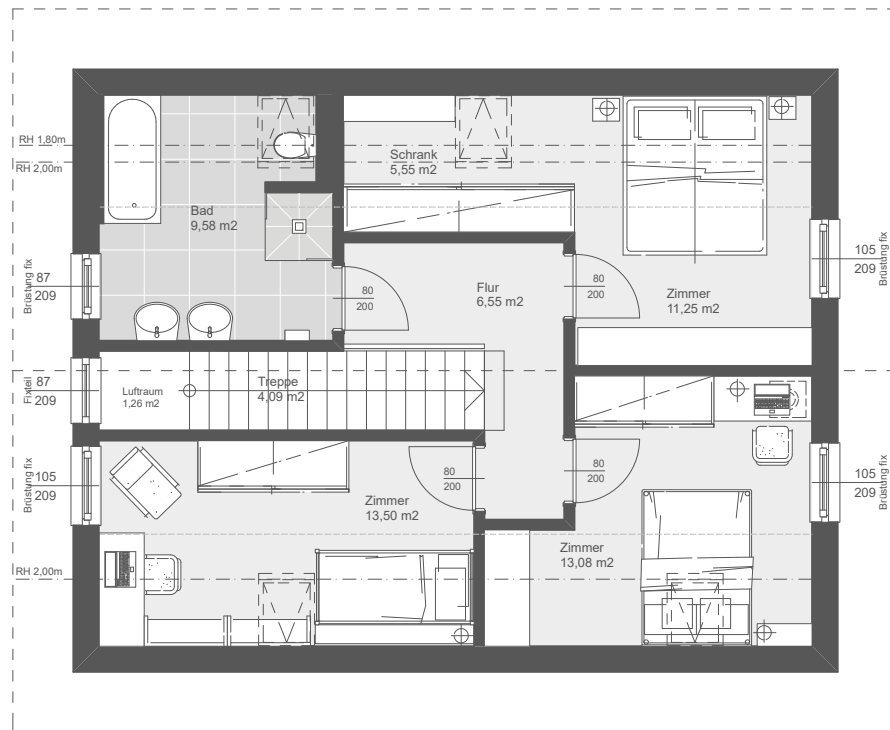
HMa / 12.06.2018

@ DIN A3

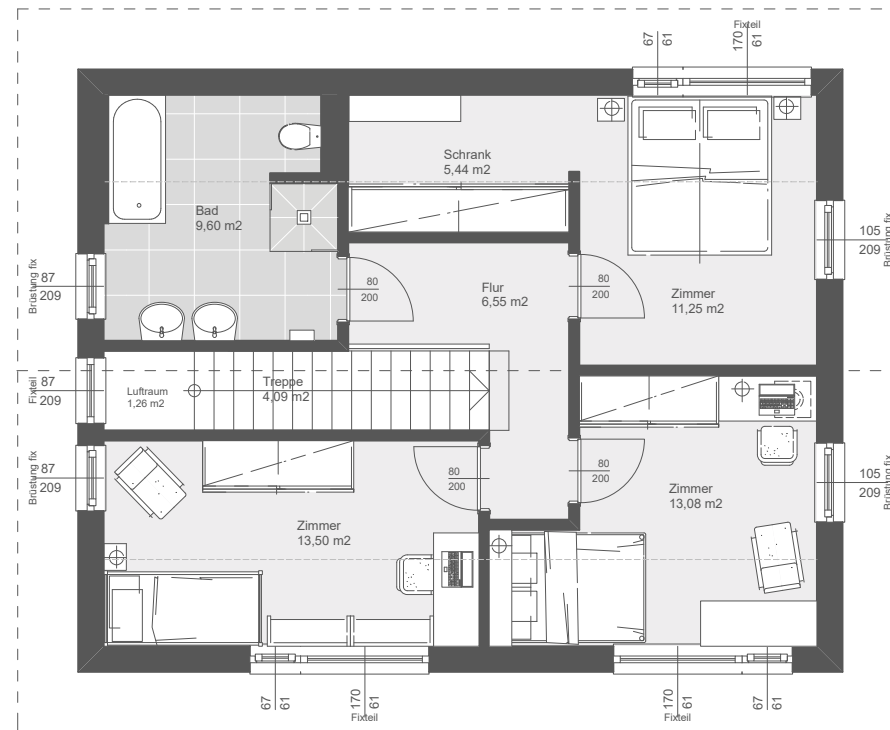


# ELK Top Living 129

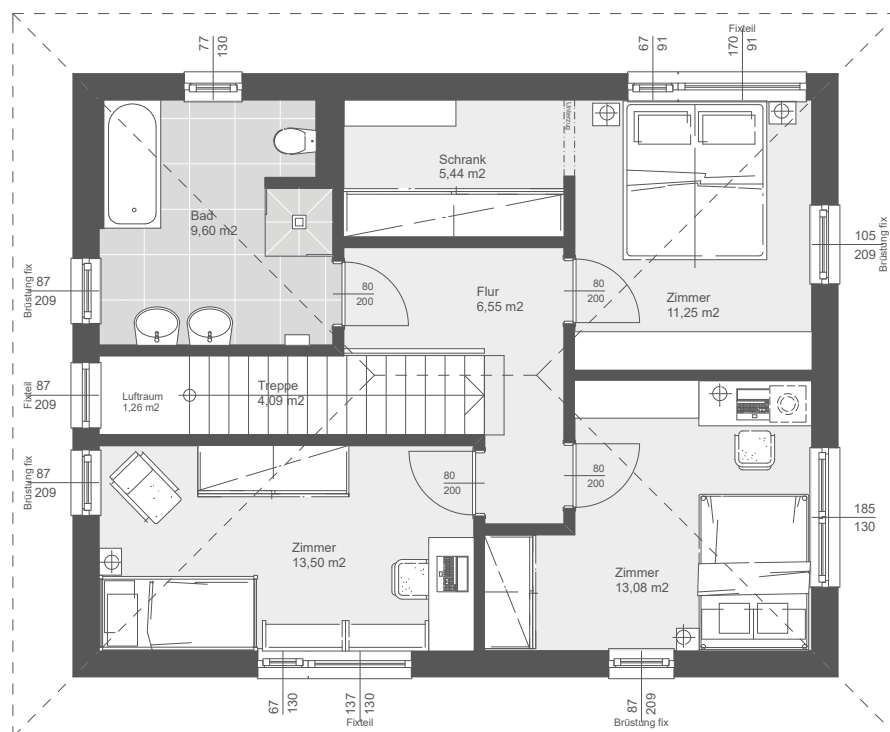
Satteldach 42° (63,60 m²)



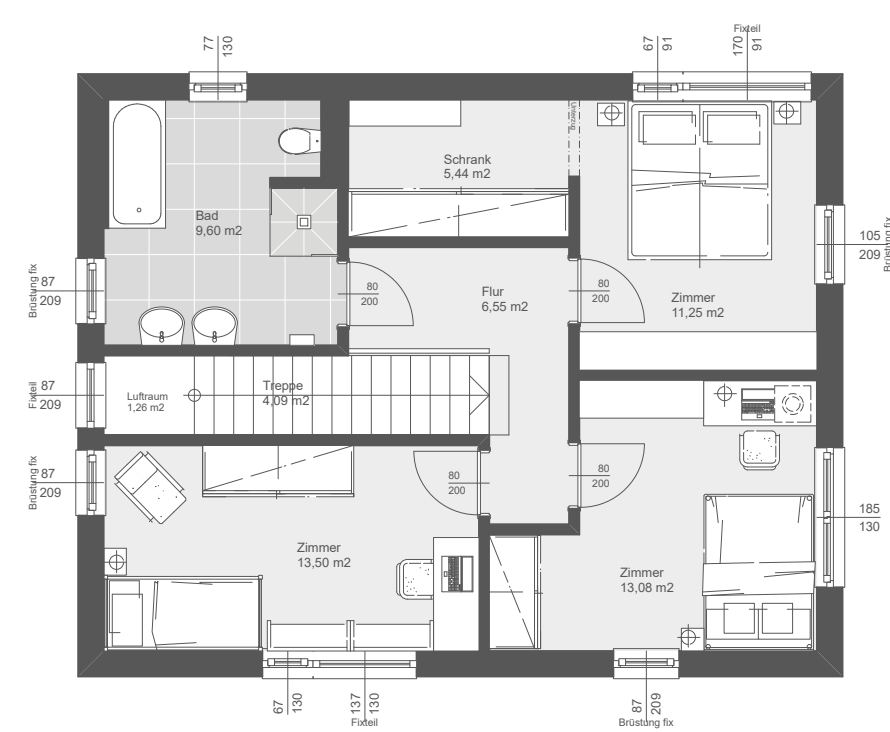
Satteldach 25°



Walmdach 25°



Flachdach



Nettogrundrissfläche  
 ERDGESCHOSS Standard 65,85 m²  
 OBERGESCHOSS 63,51 m²  
 Summe exkl. Luft Raum 129,36 m² BEBAUTE FLÄCHE 80,57 m²

DACH	Satteldach	Satteldach	Walmdach	Flachdach
	42° Kst. 1,20 m	25° Kst. 2,00 m	25°	3%

GRUNDRISSE - OG-Varianten M. 1:100

HMa / 12.06.2018

@ DIN A3

