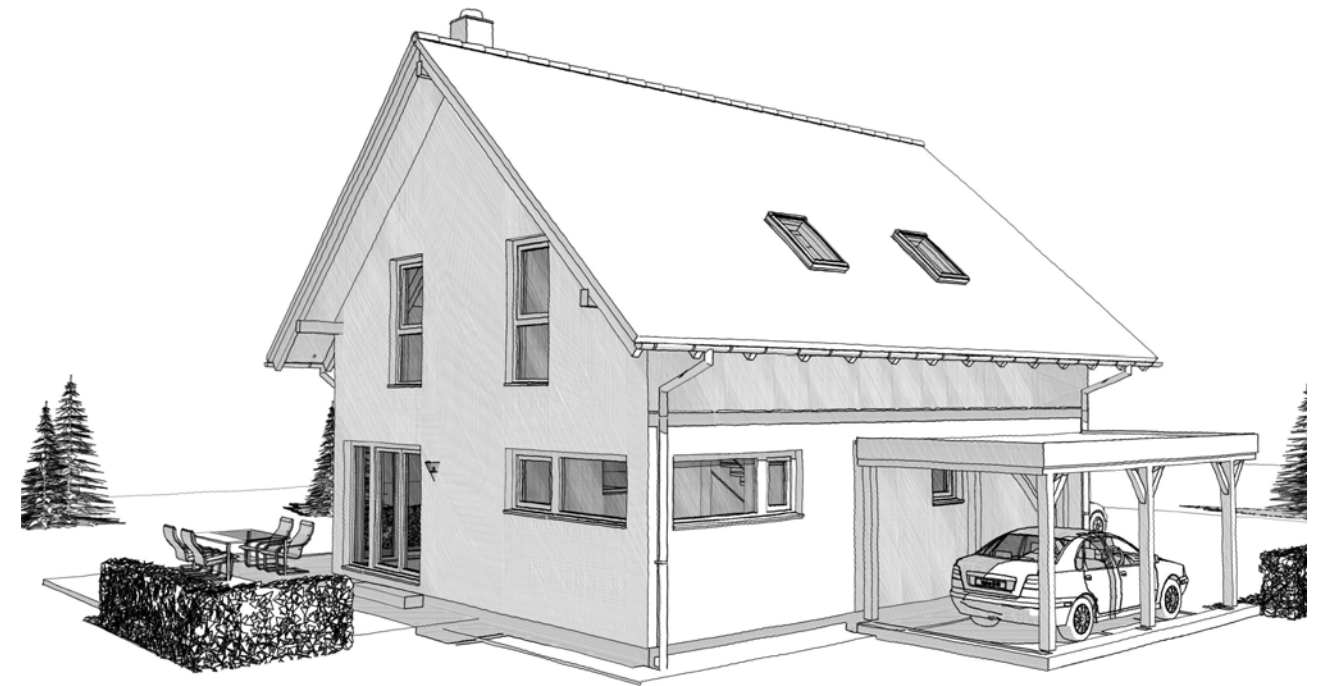
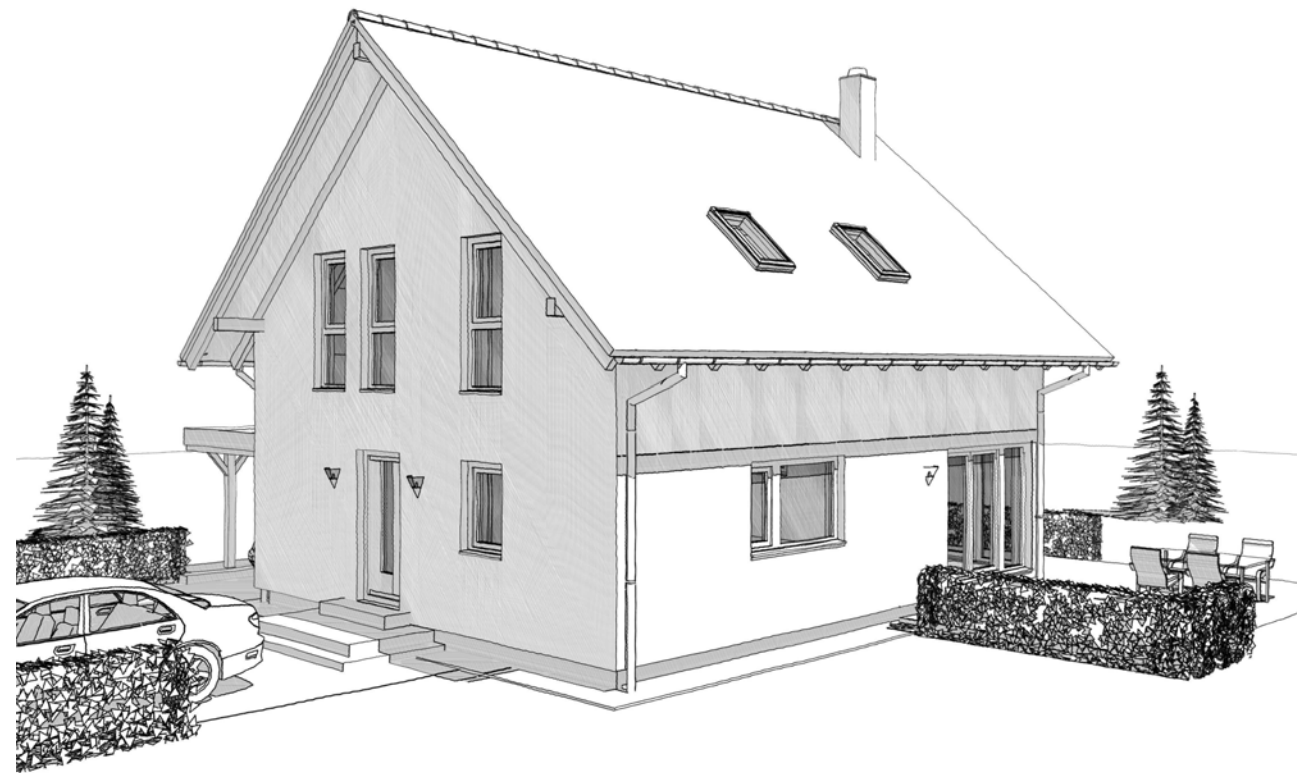
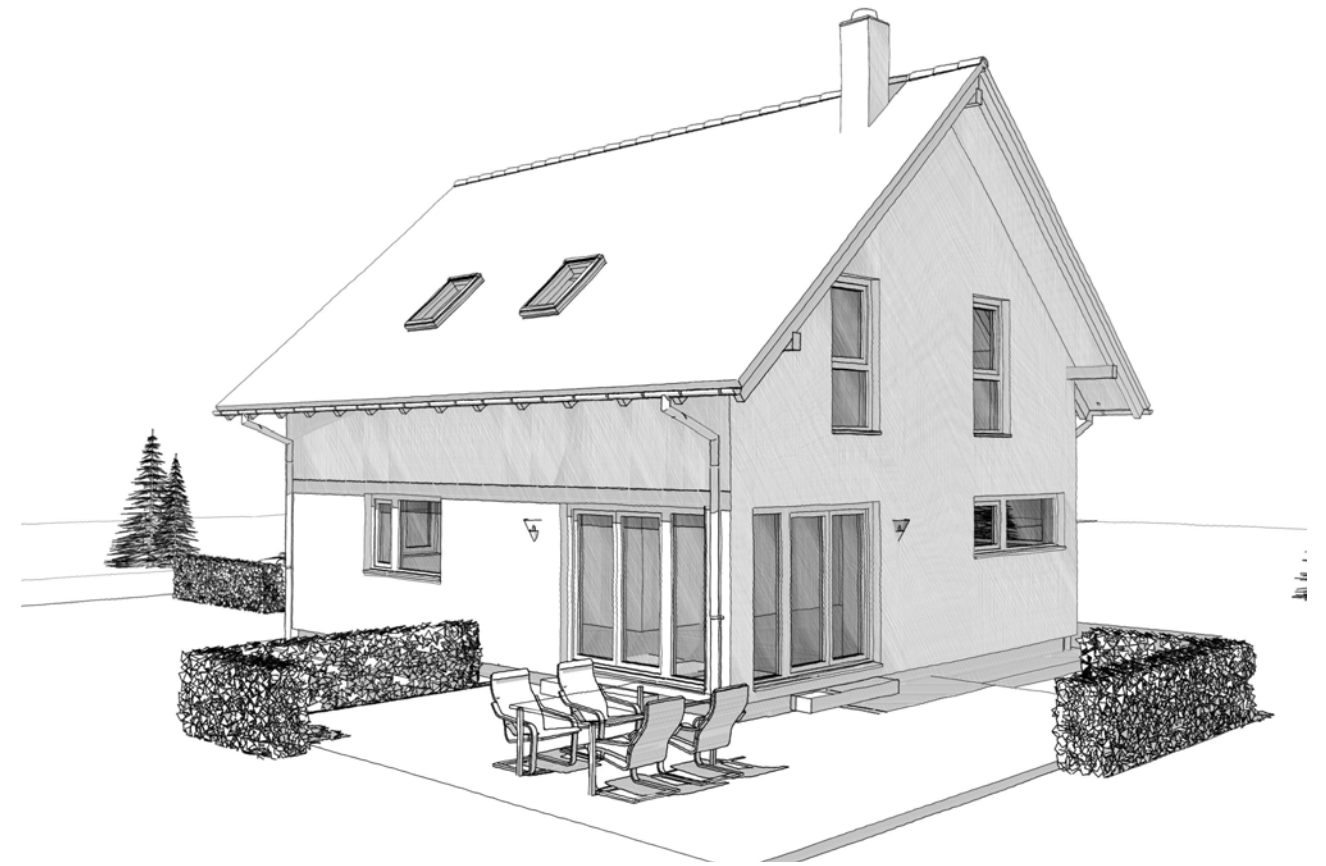
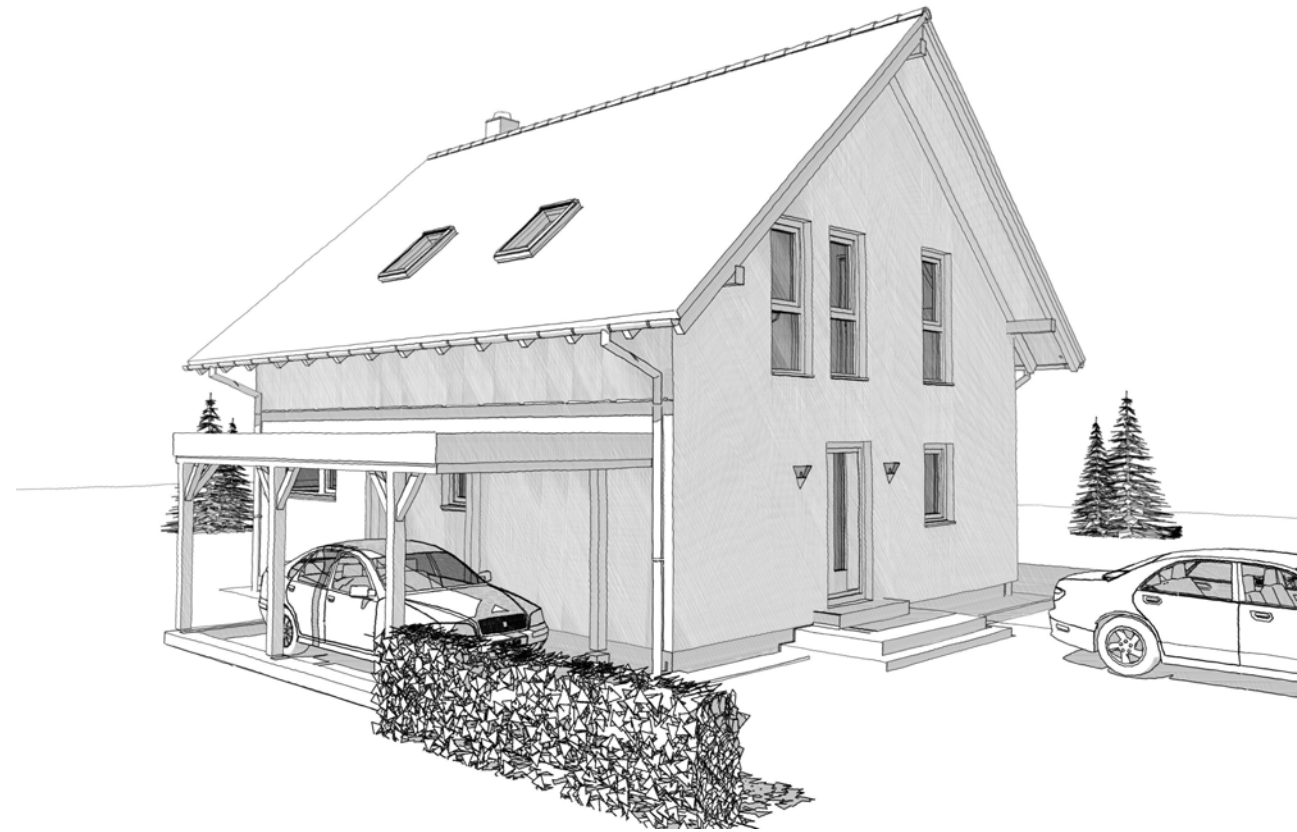


# ELK Top Living 143



DACH	Satteldach	Satteldach	Walmdach	Flachdach
	42° Kst. 1,20m	25° Kst. 2,00m	25°	3%

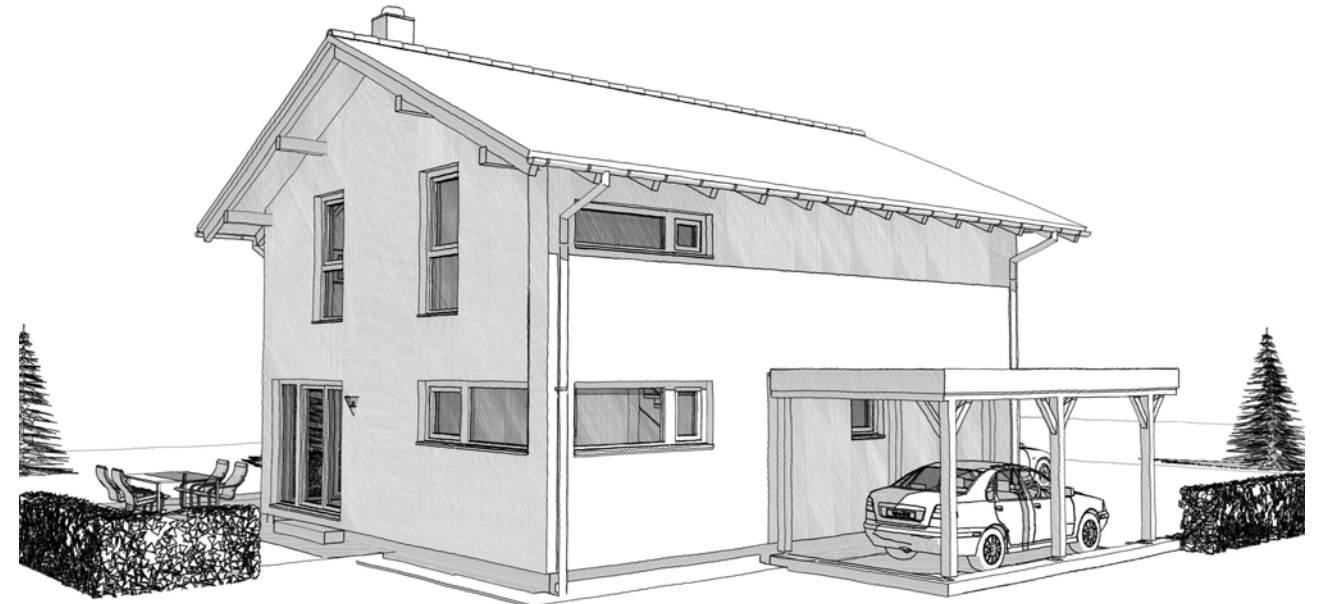
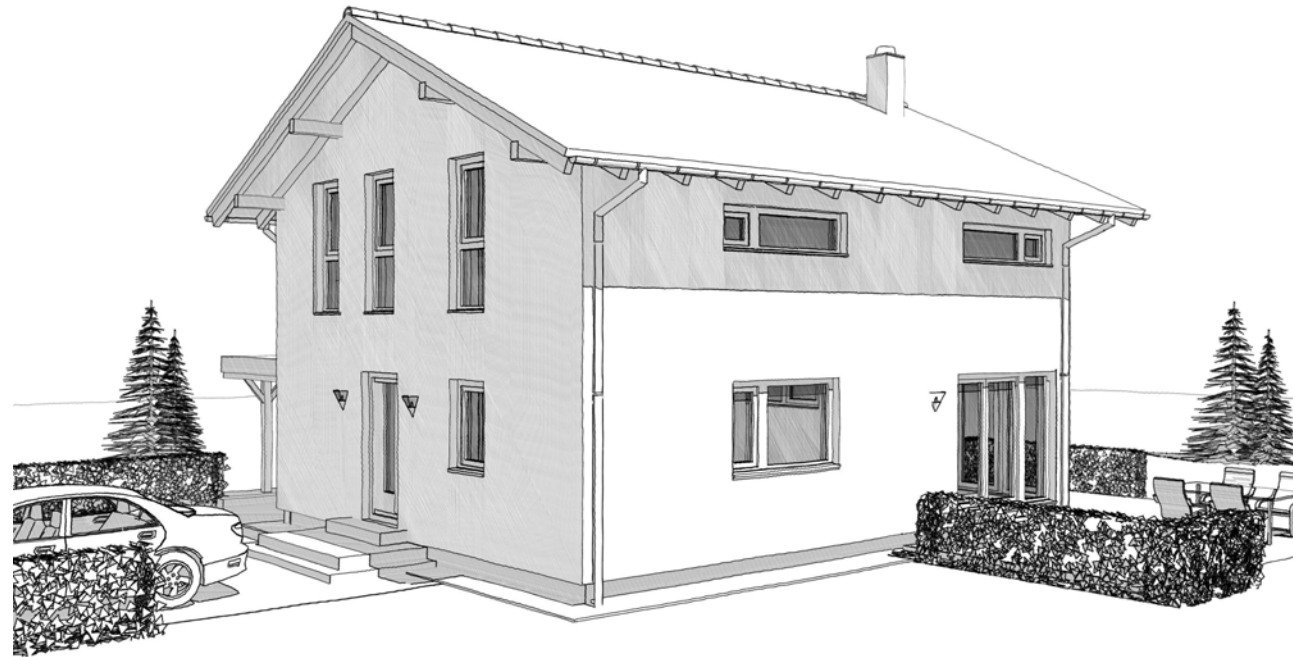
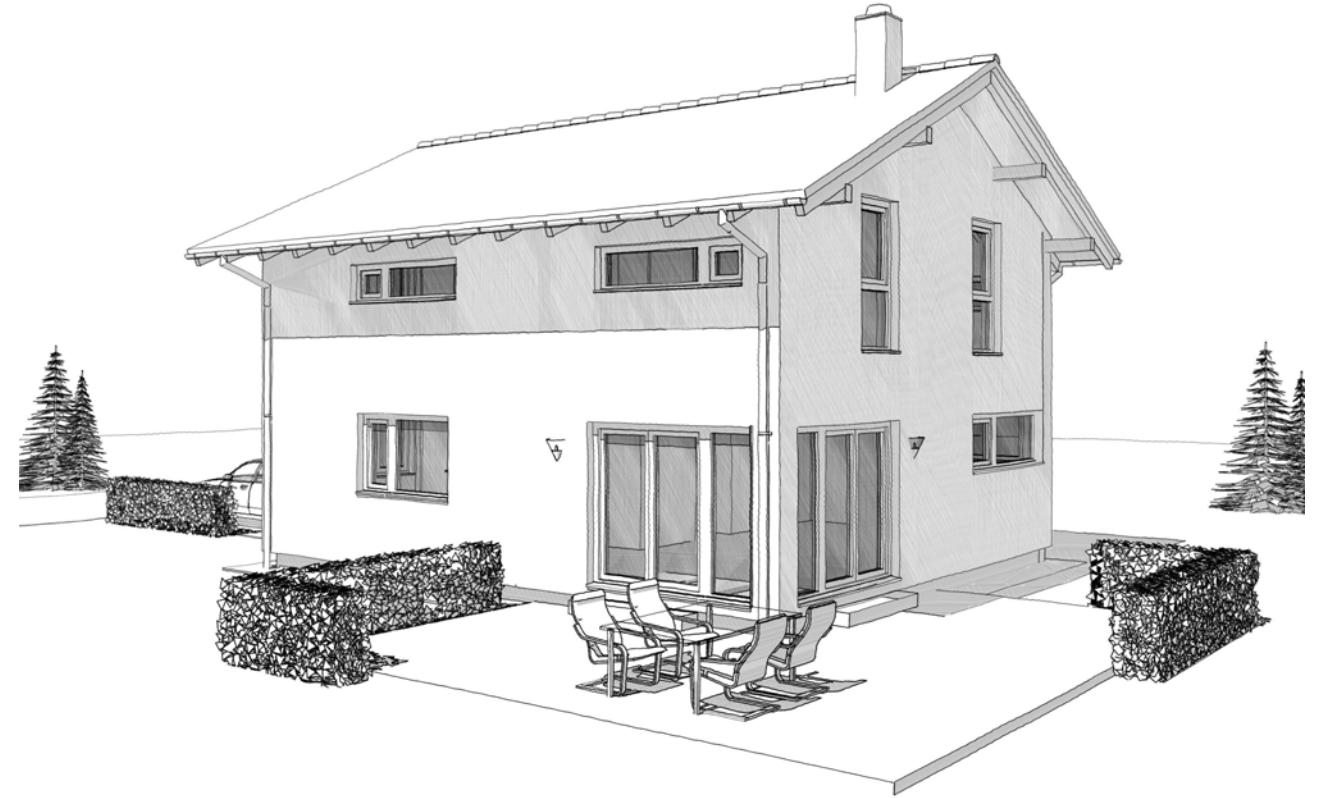
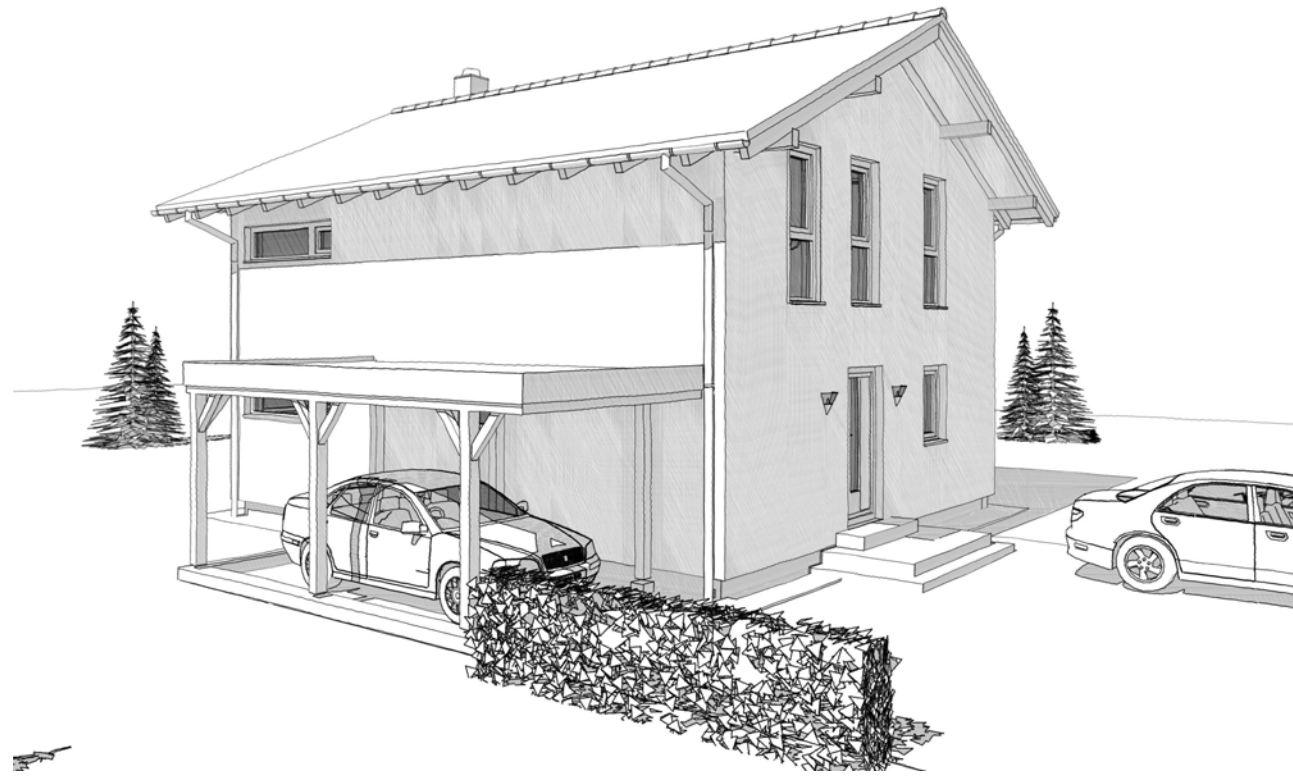
HH / 26.06.2018

@DINA3





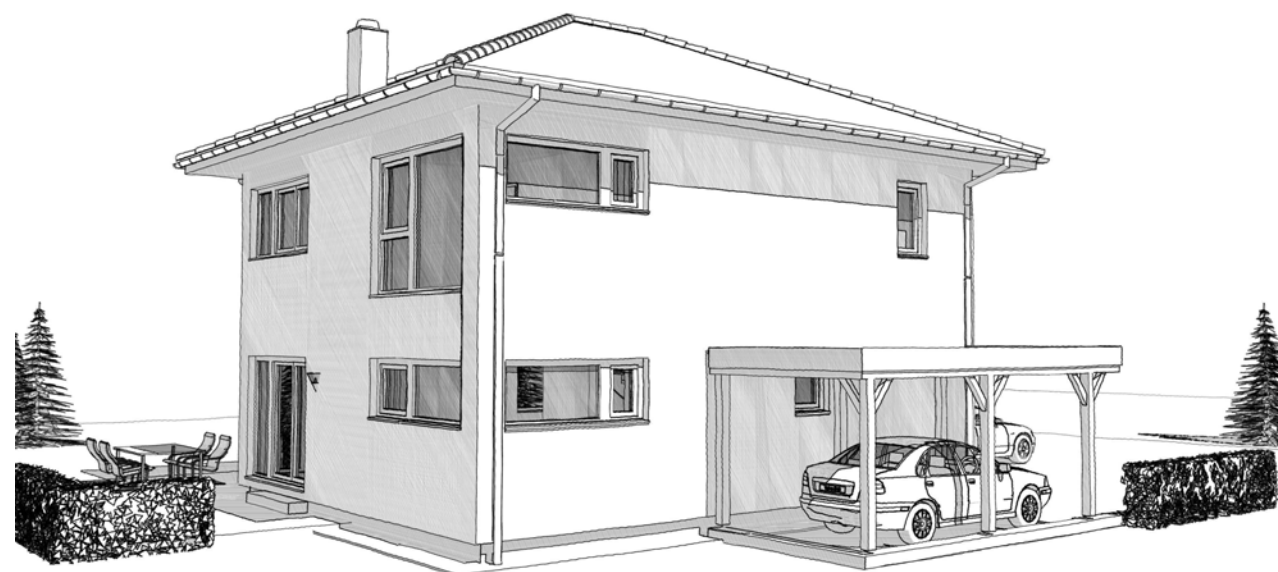
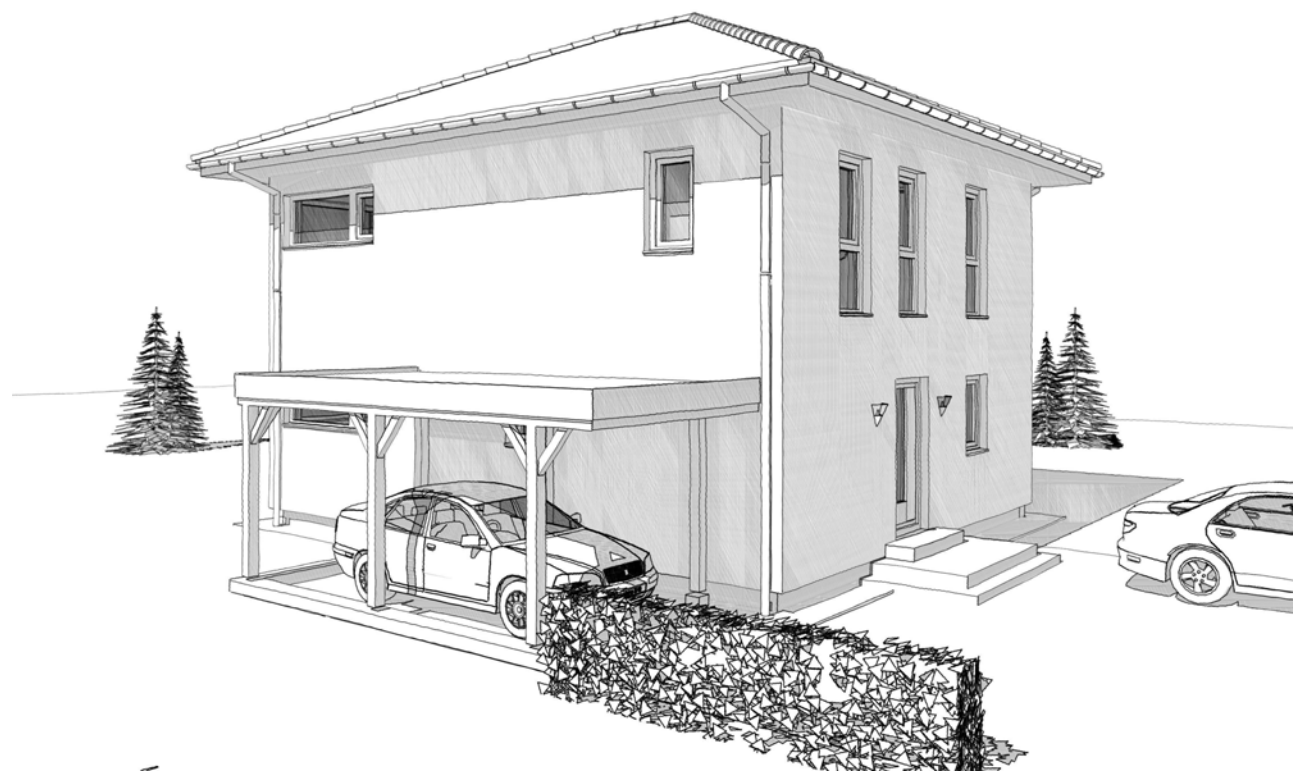
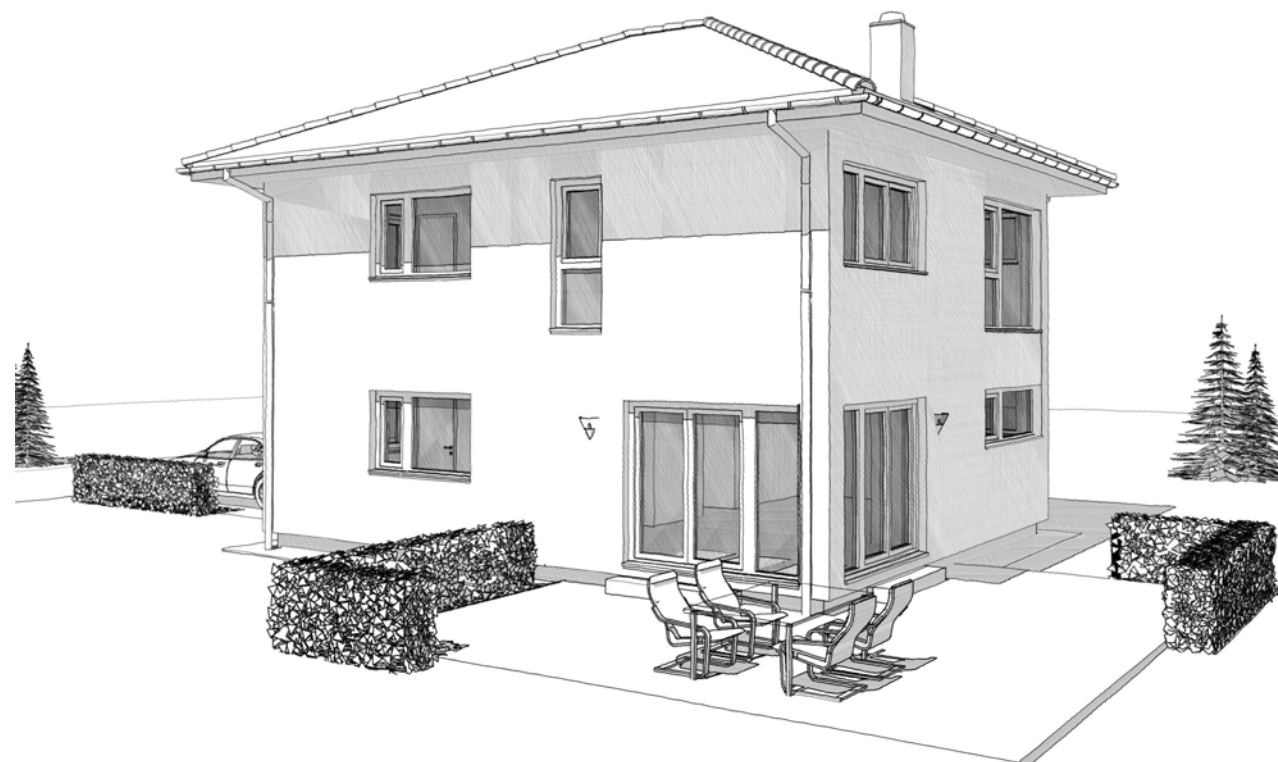
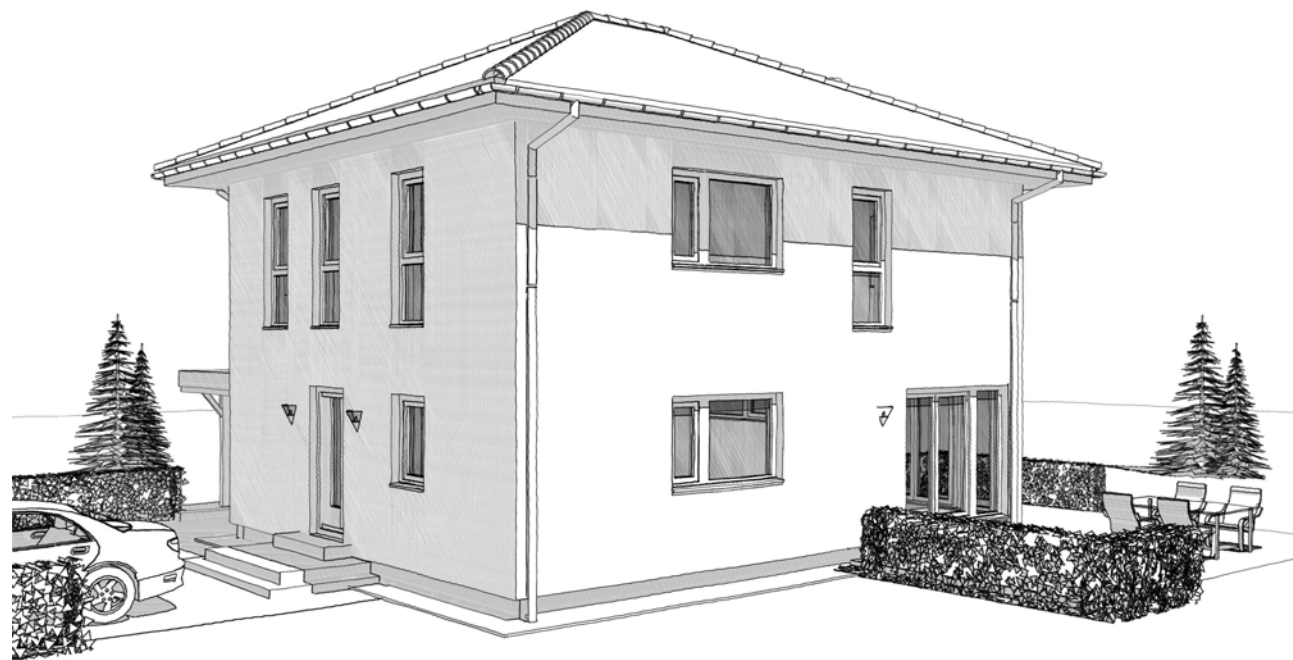
# ELK Top Living 143



DACH	Satteldach	Satteldach	Walmdach	Flachdach
	42° Kst. 1,20 m	25° Kst. 2,00 m	25°	3%

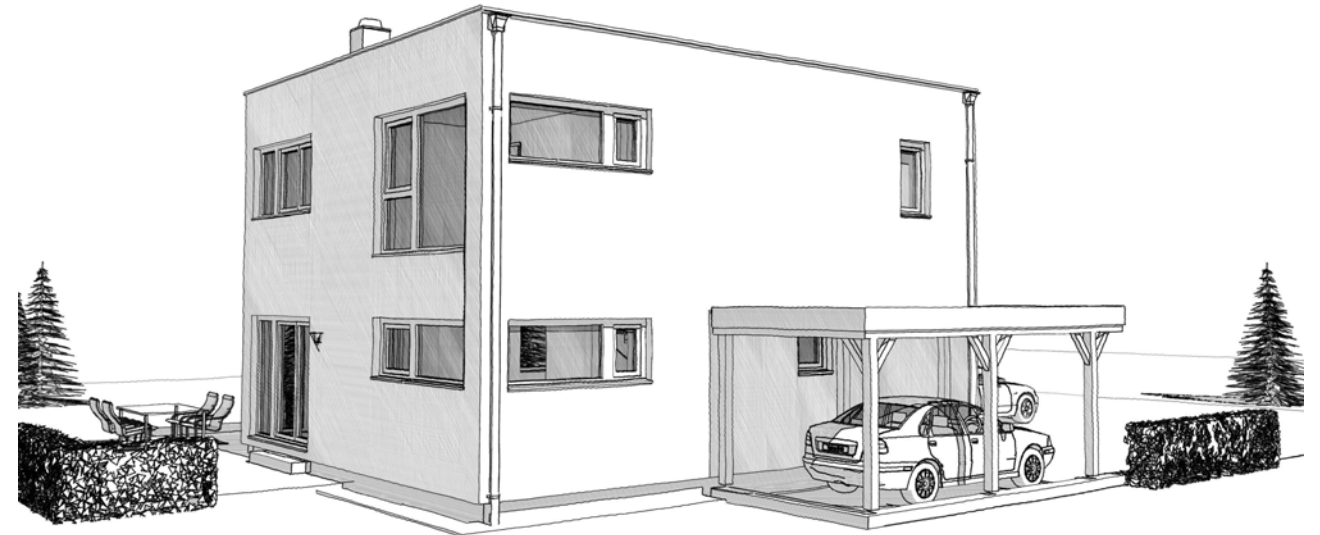
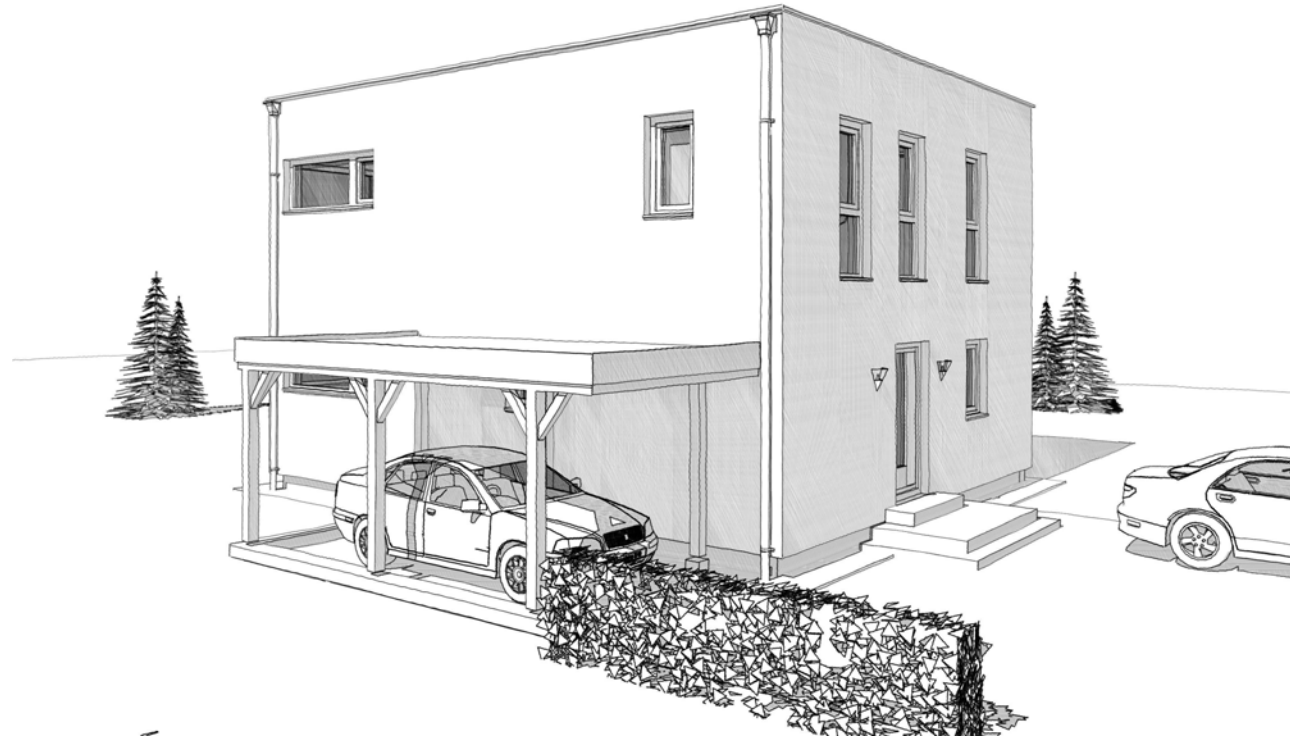
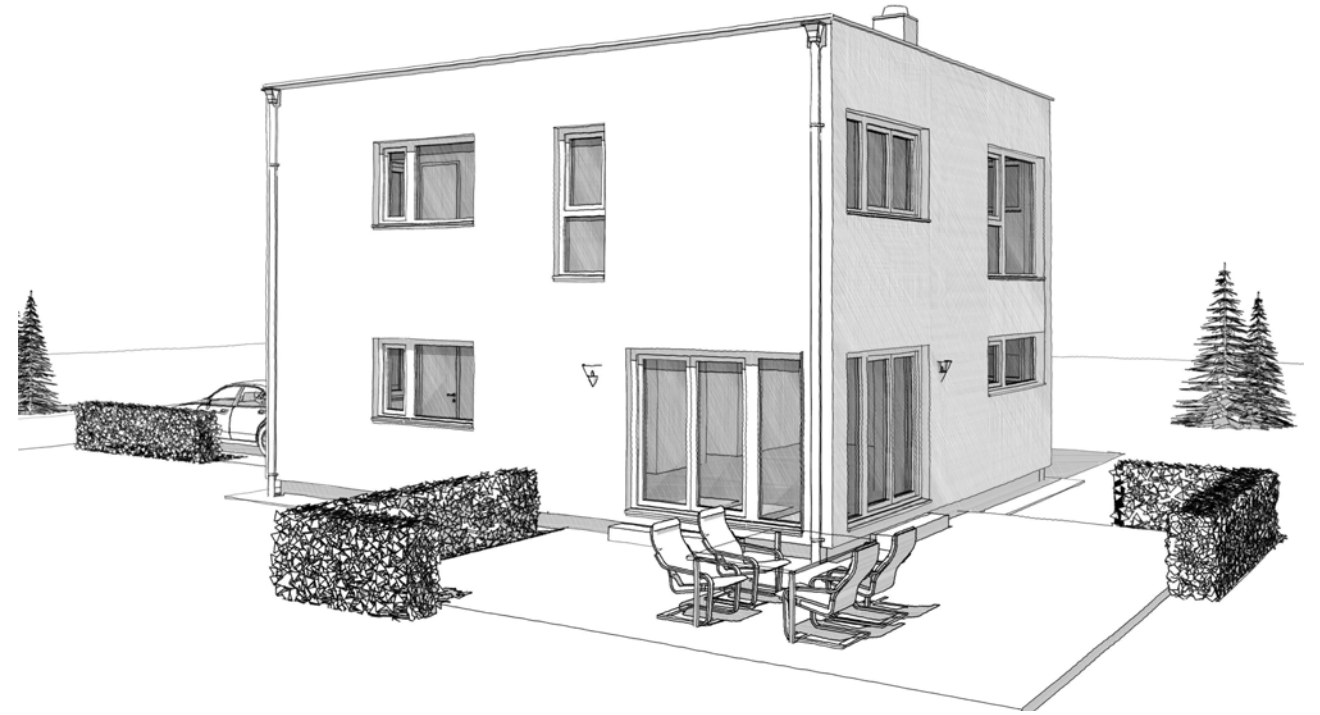
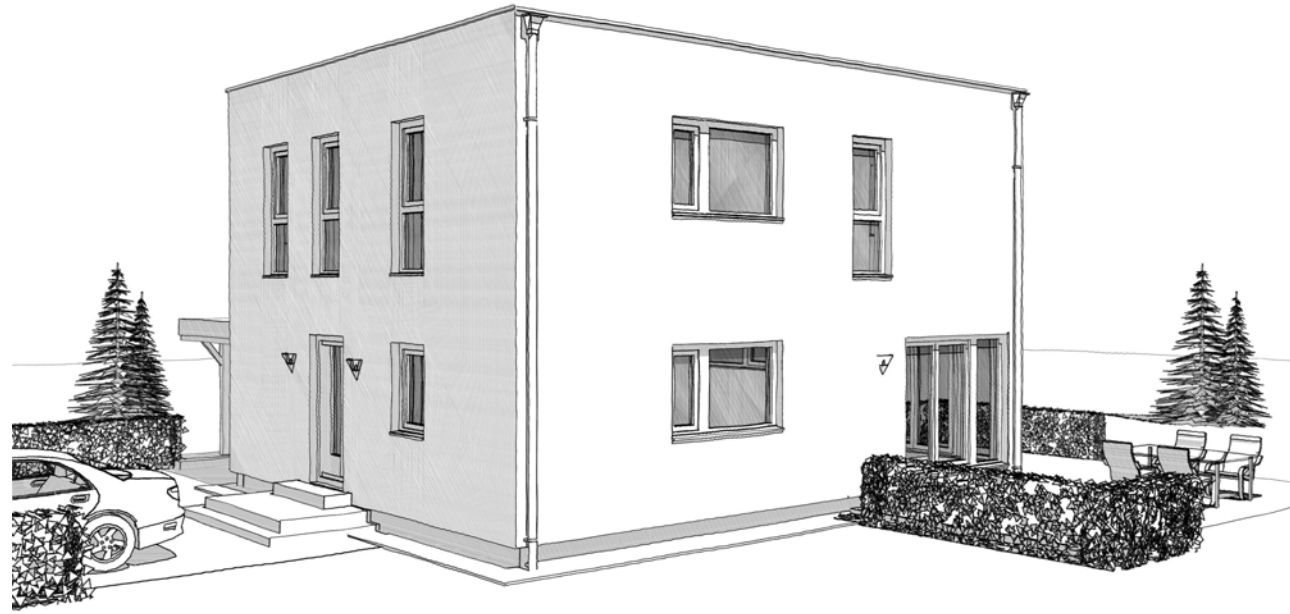


# ELK Top Living 143



DACH	Satteldach	Satteldach	Walmdach	Flachdach
	42° Kst. 1,20 m	25° Kst. 2,00 m	25°	3%

# ELK Top Living 143

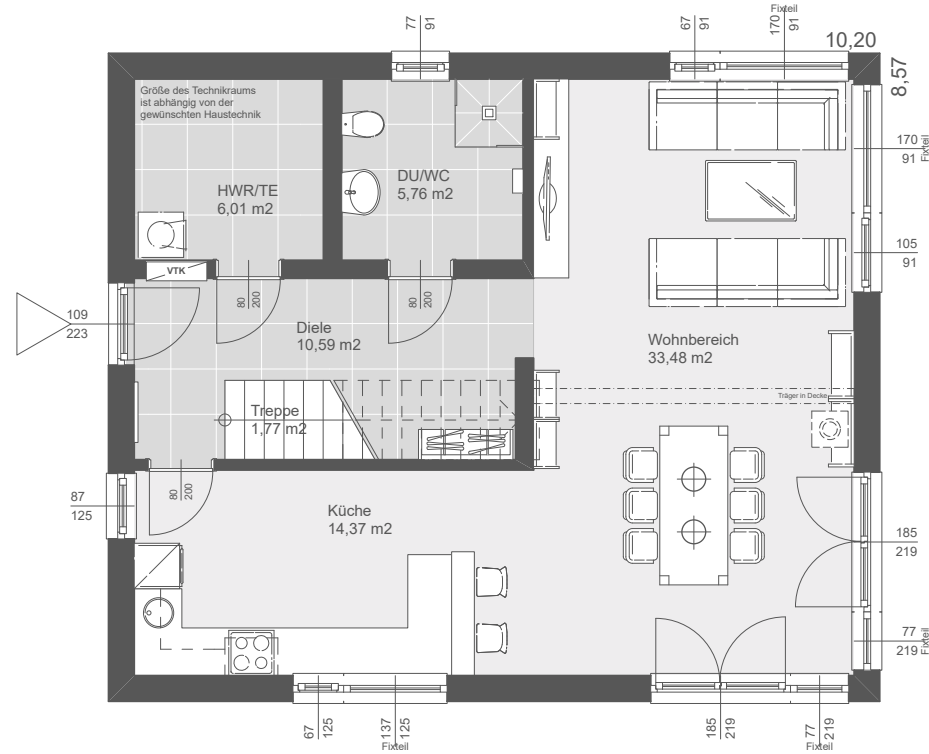


DACH	Satteldach	Satteldach	Walmdach	Flachdach
	42° Kst. 1,20 m	25° Kst. 2,00 m	25°	3%

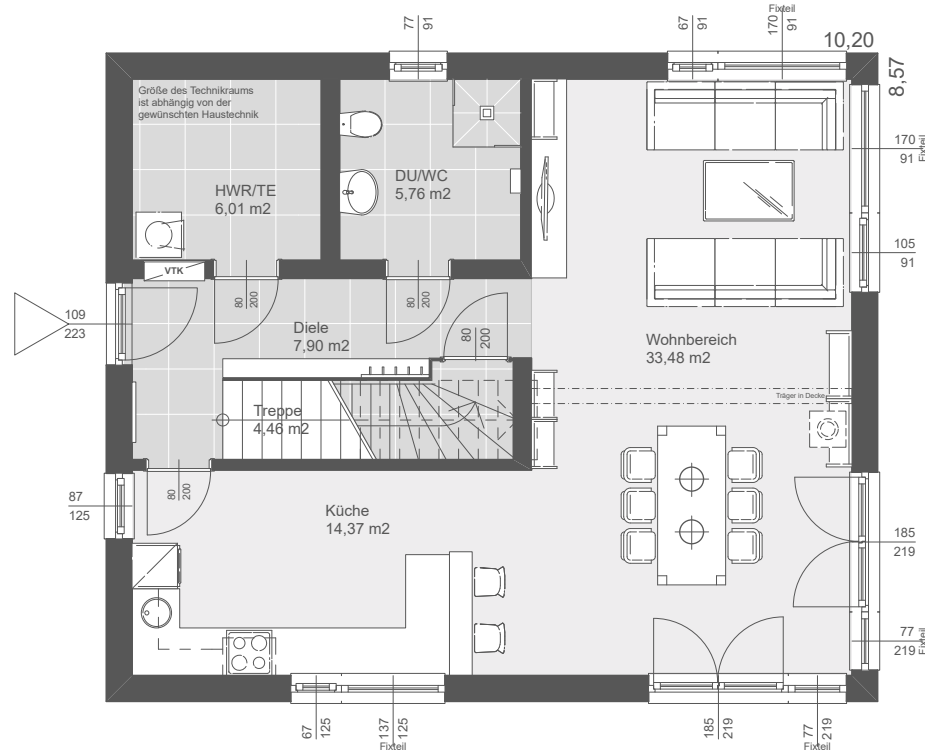


# ELK Top Living 143

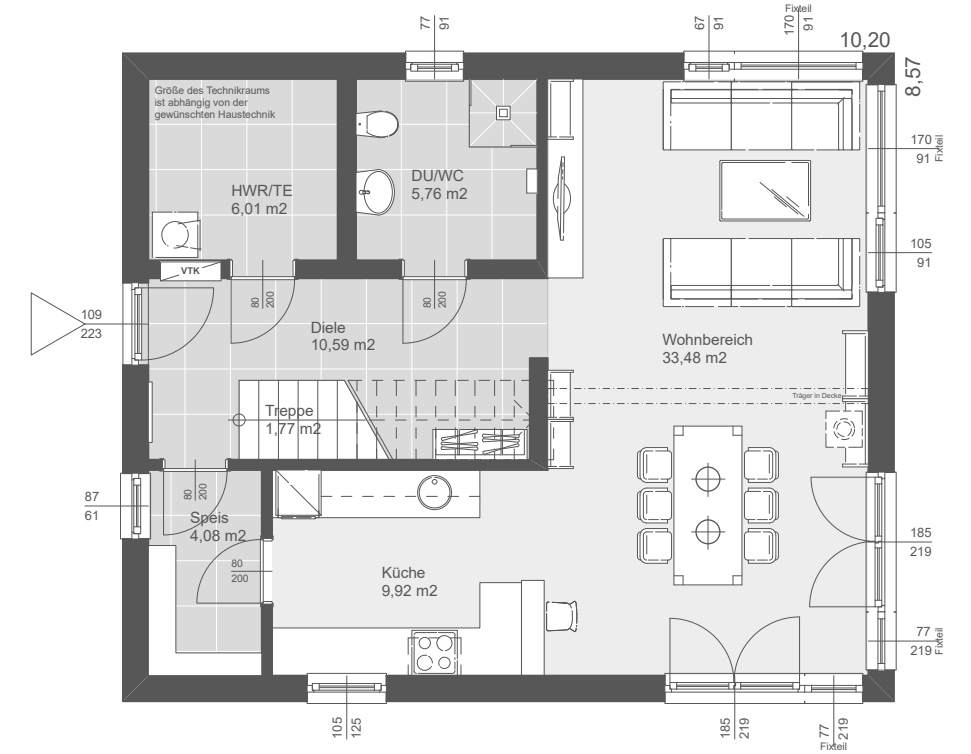
EG: Standard



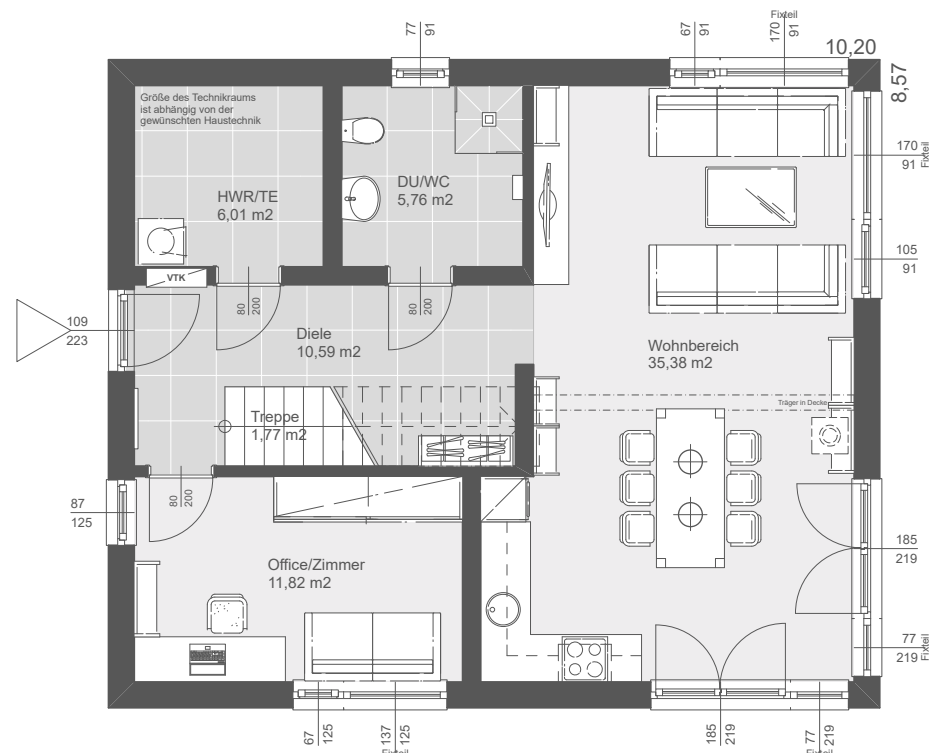
EG Variante KG-Treppe (71,98 m<sup>2</sup>)



EG Variante Speis (71,61 m<sup>2</sup>)



EG Variante Zimmer (71,33 m<sup>2</sup>)



Nettogrundrissfläche

ERDGESCHOSS Standard 71,98 m<sup>2</sup>

OBERGESCHOSS 71,12 m<sup>2</sup>

Summe 143,10 m<sup>2</sup> BEBAUTE FLÄCHE 87,39 m<sup>2</sup>

DACH	Satteldach	Satteldach	Walmdach	Flachdach
	42° Kst. 1,20 m	25° Kst. 2,00 m	25°	3%

GRUNDRISSE - EG-Varianten M. 1:100  
EGs sind bei allen Dachvarianten gleich

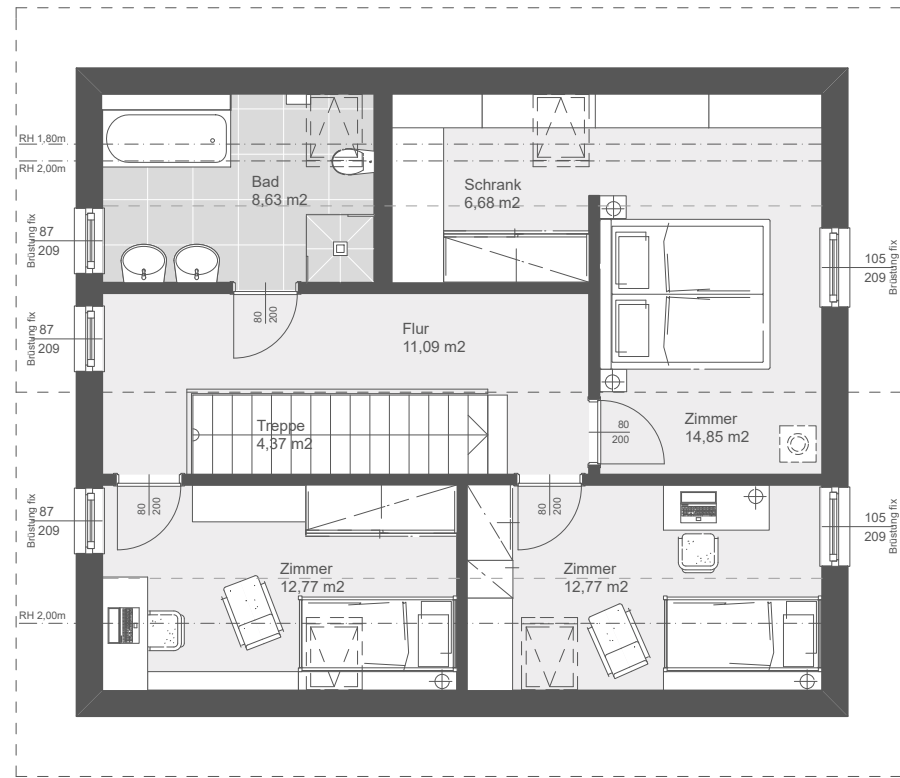
HH / 27.06.2018

@ DIN A3

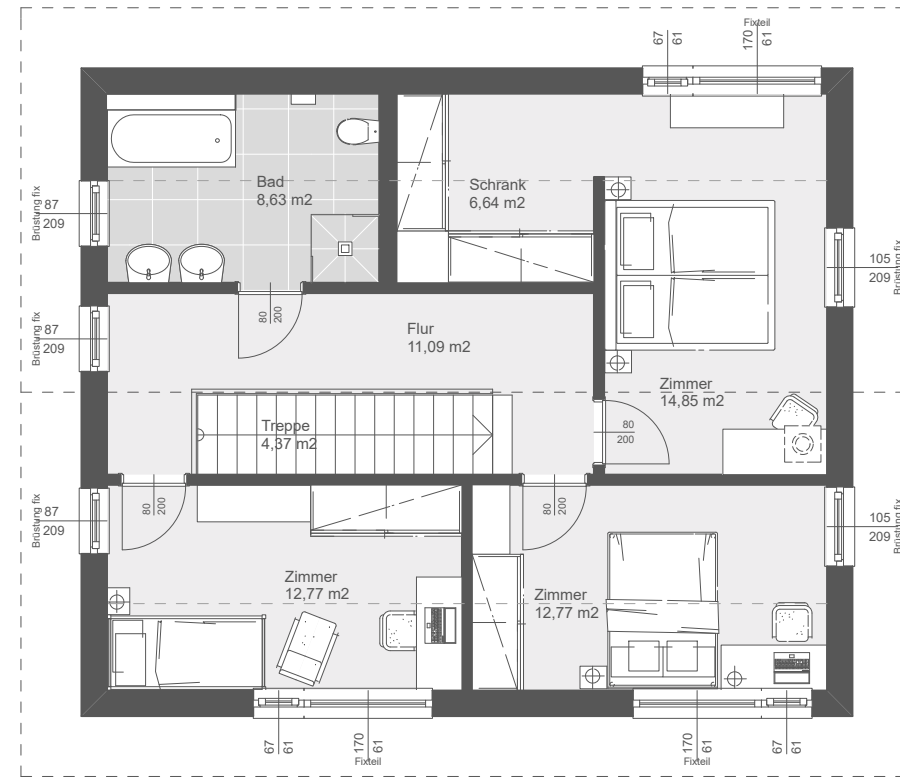


# ELK Top Living 143

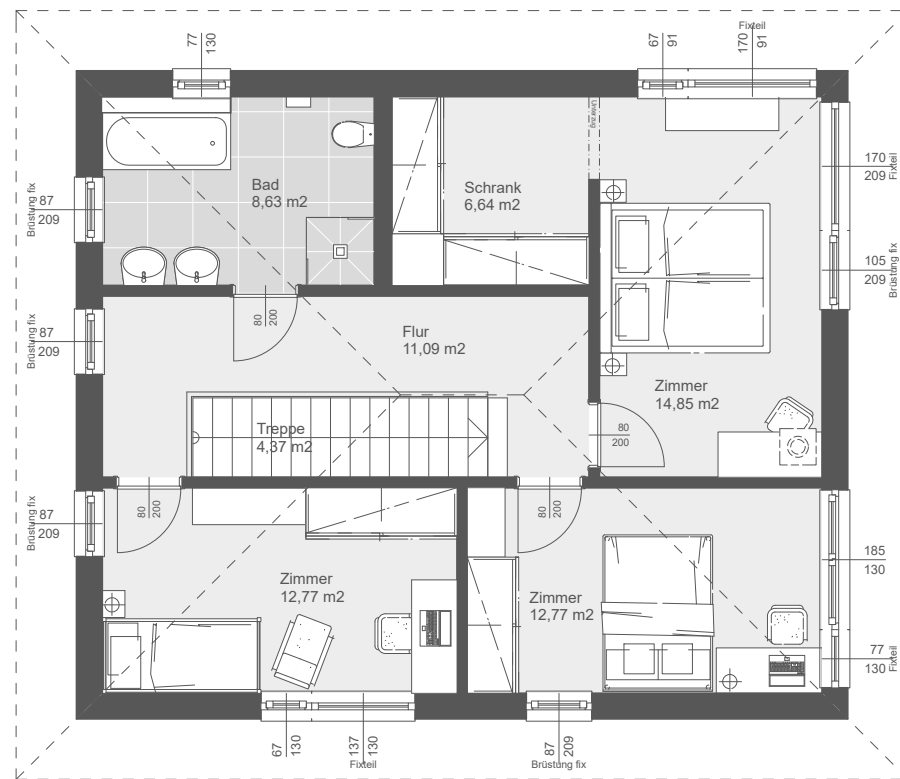
Satteldach 42°



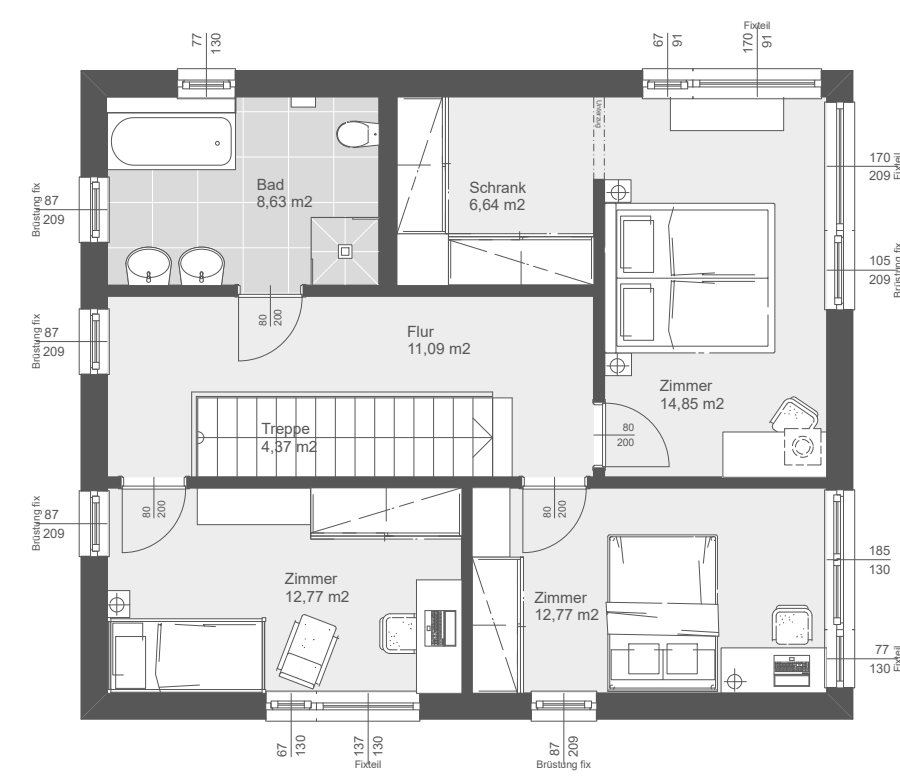
Satteldach 25°



Walmdach 25°



Flachdach



Nettogrundrissfläche  
 ERDGESCHOSS Standard 71,98 m<sup>2</sup>  
 OBERGESCHOSS 71,12 m<sup>2</sup>  
 Summe 143,10 m<sup>2</sup> BEBAUTE FLÄCHE 87,39 m<sup>2</sup>

DACH	Satteldach	Satteldach	Walmdach	Flachdach
	42° Kst. 1,20 m	25° Kst. 2,00 m	25°	3%

GRUNDRISSSE - OG-Varianten M. 1:100  
EGs sind bei allen Dachvarianten gleich

HH / 27.06.2018

@ DIN A3

